

SITE DRAWINGS

JSC Rusticated Weatherboard Flexible Wall Underlay 20mm Cavity Fix

ISSUE : 24/02/2025 | VERSION : 2.5

© J SCOTT & COMPANY LIMITED 2024



JSC PREMIUM ARCHITECTURAL
& BUILDING SOLUTIONS

TYPE
RUSTICATED WB - 20MM CAVITY FIX

NAME
COVER SHEET

- TO BE READ IN CONJUNCTION WITH COMPLETE JSC RUSTICLAD SYSTEM LITERATURE
- DETAILS MAY BE SUBJECT CHANGE WITHOUT NOTICE

CodeMark
CMNZ30081

DRAWING SCALE
1:2 @ A4

ISSUE DATE
24/02/2025

DRAWING NUMBER
JSC 20CF RC01

VERSION
2.5

INDEX

ISSUE : 12/02/2024 | VERSION : 2.4

© J SCOTT & COMPANY LIMITED 2024

Sheet Number	Sheet Title
JSC 20CF RC01	COVER SHEET
JSC 20CF RC02	INDEX
JSC 20CF RC03	GENERAL NOTES
WINDOW DETAILS - Aluminium Joinery	
JSC 20CF RC10	Window Head Detail
JSC 20CF RC11	Window Sill Detail
JSC 20CF RC12	Window Jamb Detail
JSC 20CF RC13	Window Flashing Detail
DOOR DETAILS - Aluminium Joinery	
JSC 20CF RC20	Door Head Detail
JSC 20CF RC21	Door Sill Detail
JSC 20CF RC22	Door Jamb Detail
JSC 20CF RC23	Door Flashing Detail
METER BOX DETAILS	
JSC 20CF RC30	Meter Box Head Detail
JSC 20CF RC31	Meter Box Sill Detail
JSC 20CF RC32	Meter Box Jamb Detail
JSC 20CF RC33	Meter Box Flashing Detail
GENERAL DETAILS 01	
JSC 20CF RC40	Weatherboard Fixing Detail
JSC 20CF RC41	Weatherboard Scarf Joint
JSC 20CF RC42	Base of Wall, Concrete
JSC 20CF RC43	Base of Wall, Timber
JSC 20CF RC44	Pipe Penetration
JSC 20CF RC45	3D - Pipe Penetration
GENERAL DETAILS 02	
JSC 20CF RC50	External Corner
JSC 20CF RC51	3D - External Corner
JSC 20CF RC52	External Corner
JSC 20CF RC53	3D - External Corner
GENERAL DETAILS 03	
JSC 20CF RC60	Internal Corner
JSC 20CF RC61	3D - Internal Corner
JSC 20CF RC62	Internal Corner
JSC 20CF RC63	3D - Internal Corner
GENERAL DETAILS 04	
JSC 20CF RC70	Base of Wall, Membrane Roof
JSC 20CF RC71	Parapet Saddle Flashing - Stage ONE
JSC 20CF RC72	Parapet Saddle Flashing - Stage TWO
JSC 20CF RC73	Parapet Saddle Flashing - Stage THREE
JSC 20CF RC74	Typical Parapet - Capping Joint Detail
JSC 20CF RC75	Parapet Section to Membrane Roof
GENERAL DETAILS 05	
JSC 20CF RC80	Drained Inter Storey Joint
JSC 20CF RC81	Apron Flashing Roof to Wall Junction
JSC 20CF RC82	Soffit Detail at Wall
JSC 20CF RC83	Soffit Detail at Fascia
JSC 20CF RC84	Parapet Detail



GENERAL NOTES

ISSUE : 24/02/2025 | VERSION : 2.5

© J SCOTT & COMPANY LIMITED 2024

OVERVIEW :

JSC RustiClad is a cavity based external wall cladding system comprising of:

- timber weatherboards finished with high quality exterior grade coatings
- H3.2 treated timber castellated cavity battens
- fascia boards and moulding profiles

This documentation covers the fixing instructions for the installation of JSC rusticated weatherboards over JSC-U 20mm thick castellated cavity battens.

The information in this document has been specifically grouped in 2 different layouts to help Architects, Designers & Builders on site.

1. A3/A1 ARCHITECTURAL DRAWINGS:

Similar details are grouped to make up a completed A1/A3 drawings make it easier to import into the project plan.

2. A4 SITE DRAWINGS

Same information is made available on a A4 page at a larger scale for builders making it easier to read and distribute the drawings on site.

SCOPE OF USE

- This document is for use exclusively within the scope of JSC RustiClad rusticated Weatherboard Cladding System technical documentation and Code Compliance CodeMark certificate CMNZ30081.
- Details are subject to change without notification and only the current version is compliant.
- Refer to www.jsc.co.nz at the time of use for the current documentation.
- The designer/specifier must be satisfied that these details are applicable for their intended use.

FIXING SPECIFICATION

SPECIES	FIXINGS MATERIAL
Western Red Cedar	316 Stainless Steel or Silicon Bronze annular grooved nails
Alaskan Yellow Cedar	316 Stainless Steel or Silicon Bronze annular grooved nails
Radiata Pine / Nordic Pine	316 Stainless Steel or Silicon Bronze annular grooved nails
JSC-TMT® Thermally Modified Timber	
TMT TAIGA (RW/WW)	316 Stainless Steel or Silicon Bronze annular grooved nails
TMT TAXON	316 Stainless Steel or Silicon Bronze annular grooved nails
TMT TUSCAN	316 Stainless Steel or Silicon Bronze annular grooved nails
TMT AMBA	316 Stainless Steel or Silicon Bronze annular grooved nails
THERMOPINE	316 Stainless Steel or Silicon Bronze annular grooved nails

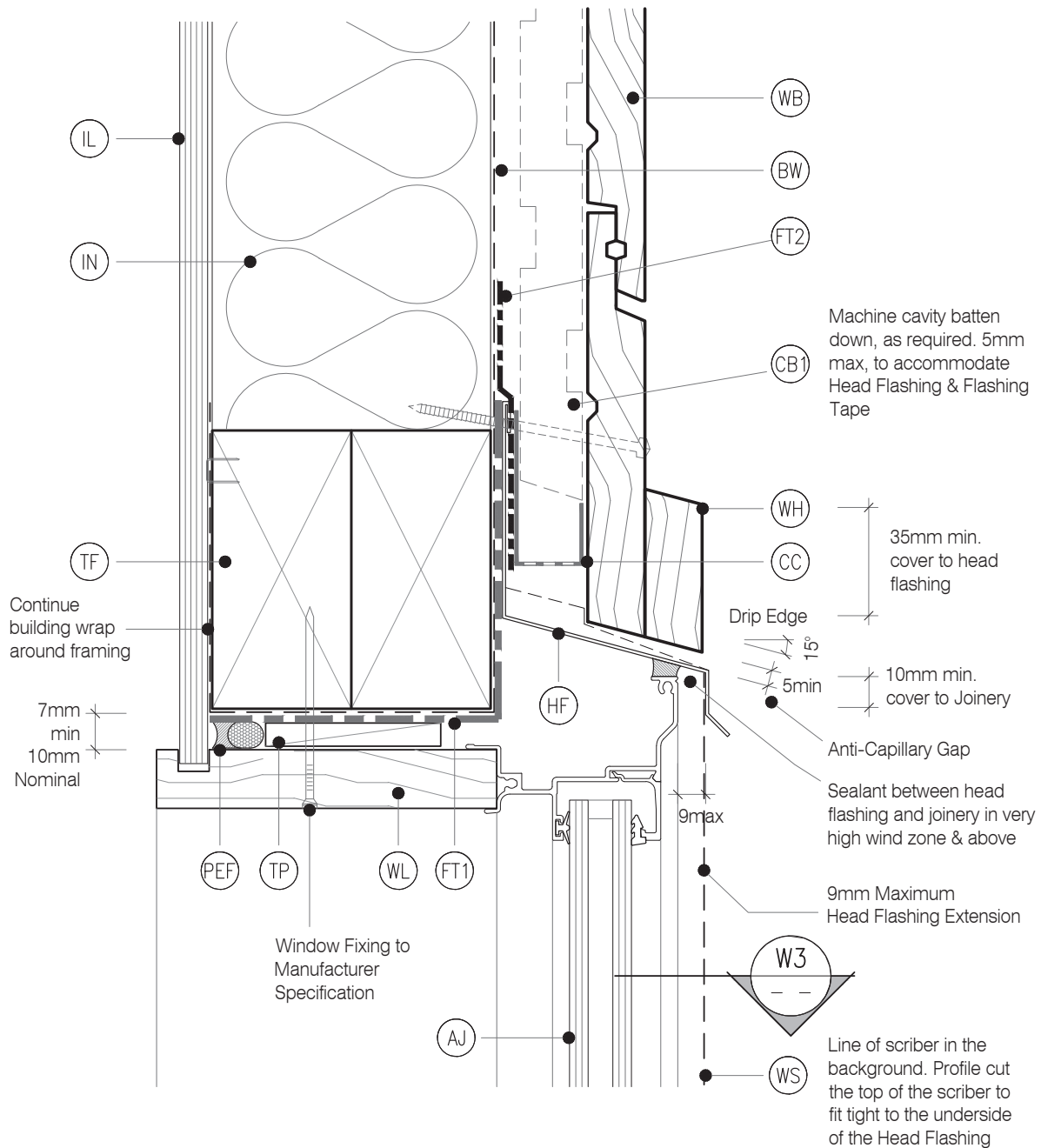


LEGEND:

- (AJ) ALUMINIUM JOINERY: Selected double glazed aluminium joinery. To E2/AS1 9.1.10
- (BW) BUILDING WRAP: Flexible Wall Underlay, As per NZBC E2/AS1 - Table 23, In extra high wind zones, Rigid Underlay required (9.1.7.2 E2/AS1)
- (CB1) CAVITY BATTEN - NON STRUCTURAL: Vertically installed JSC-U 45mm x 20mm Radiata Pine H3.2 treated, both face castellated and 18° bevelled edges. Site machined to allow for flashing.
- (CC) CAVITY CLOSURE: Cavity closure strip, positioned to give a 15mm min. drip edge to cladding
- (FT1) FLASHING TAPE: Flashing tape over wrap 70mm (50 min) turn-down required in corners only. Refer to Fig. 72 of NZBC E2/AS1

- (FT2) FLEXIBLE FLASHING TAPE: Flexible flashing tape lapped over aluminium head flashing or 2nd layer of Building Wrap, taped joint to top of timber frame
- (HF) HEAD FLASHING: Aluminium head flashing with minimum 15 degree fall, optional hemmed edges as per table 7 E2/AS1
- (IL) INTERNAL LINING: Selected Internal Lining
- (IN) INSULATION: Selected Insulation
- (PEF) PEF ROD BACKING: Foam backing rod with sealant to cavity in Window perimeter that forms a waterproof air-seal. (Sealant 2:1 Ratio)
- (TF) TIMBER FRAME: H1.2 min treated timber framing

- (TP) TIMBER PACKER: Tan H3.2 Treated Packer
- (WL) WINDOW LINER: As Specified
- (WB) WEATHER BOARD: JSC Rusticated Weatherboard
- (WH) WEATHERHEAD: (OPTIONAL) Selected JSC Horizontal batten above window as necessary to suit profile, shaped to shed water, sealant to back of head scriber
- (WS) WINDOW SCRIBER: Sealant to back of scriber and 75 x 3.15mm 316 Stainless Steel nail in 3mm predrilled hole.
- (WZ) WANZ SUPPORT: Provide window support as required by joinery manufacturer

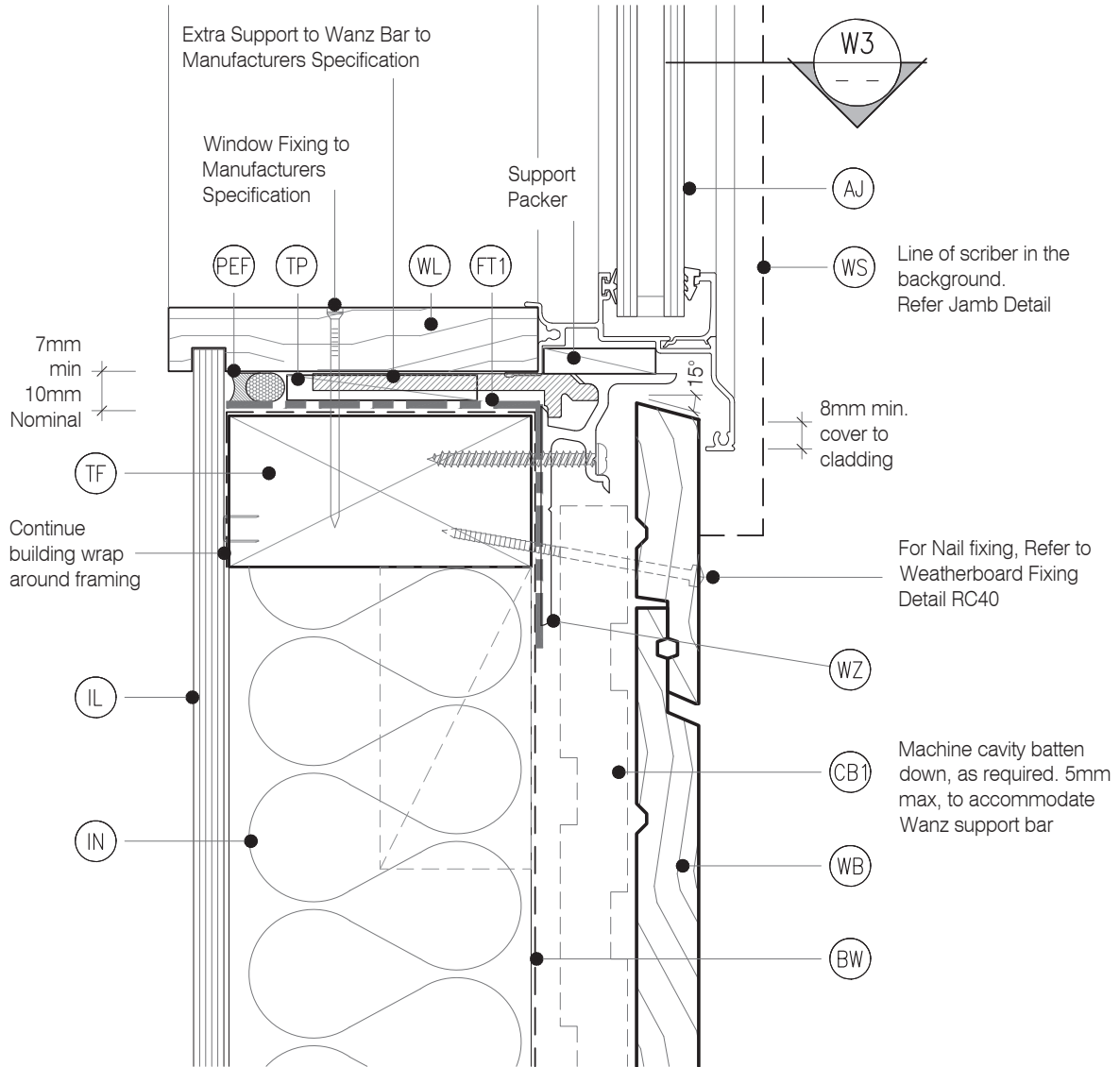


LEGEND :

- (AJ) ALUMINIUM JOINERY: Selected double glazed aluminium joinery. To E2/AS1 9.1.10
- (BW) BUILDING WRAP: Flexible Wall Underlay, As per NZBC E2/AS1 - Table 23, In extra high wind zones, Rigid Underlay required (9.1.7.2 E2/AS1)
- (CB1) CAVITY BATTEN - NON STRUCTURAL : Vertically installed JSC-U 45mm x 20mm Radiata Pine H3.2 treated, both face castellated and 18° bevelled edges. Site machined to allow for flashing.
- (CC) CAVITY CLOSURE: Cavity closure strip, positioned to give a 15mm min. drip edge to cladding
- (FT1) FLASHING TAPE: Flashing tape over wrap 70mm (50 min) turn-down required in corners only. Refer to Fig. 72 of NZBC E2/AS1

- (FT2) FLEXIBLE FLASHING TAPE: Flexible flashing tape lapped over aluminium head flashing or 2nd layer of Building Wrap, taped joint to top of timber frame
- (HF) HEAD FLASHING: Aluminium head flashing with minimum 15 degree fall, optional hemmed edges as per table 7 E2/AS1
- (IL) INTERNAL LINING: Selected Internal Lining
- (IN) INSULATION: Selected Insulation
- (PEF) PEF ROD BACKING: Foam backing rod with sealant to cavity in Window perimeter that forms a waterproof air-seal. (Sealant 2:1 Ratio)
- (TF) TIMBER FRAME: H1.2 min treated timber framing

- (TP) TIMBER PACKER: Tan H3.2 Treated Packer
- (WL) WINDOW LINER: As Specified
- (WB) WEATHER BOARD: JSC Rusticated Weatherboard
- (WH) WEATHERHEAD: (OPTIONAL) Selected JSC Horizontal batten above window as necessary to suit profile, shaped to shed water, sealant to back of head scribe
- (WS) WINDOW SCRIBER: Sealant to back of scribe and 75 x 3.15mm 316 Stainless Steel nail in 3mm predrilled hole.
- (WZ) WANZ SUPPORT: Provide window support as required by joinery manufacturer

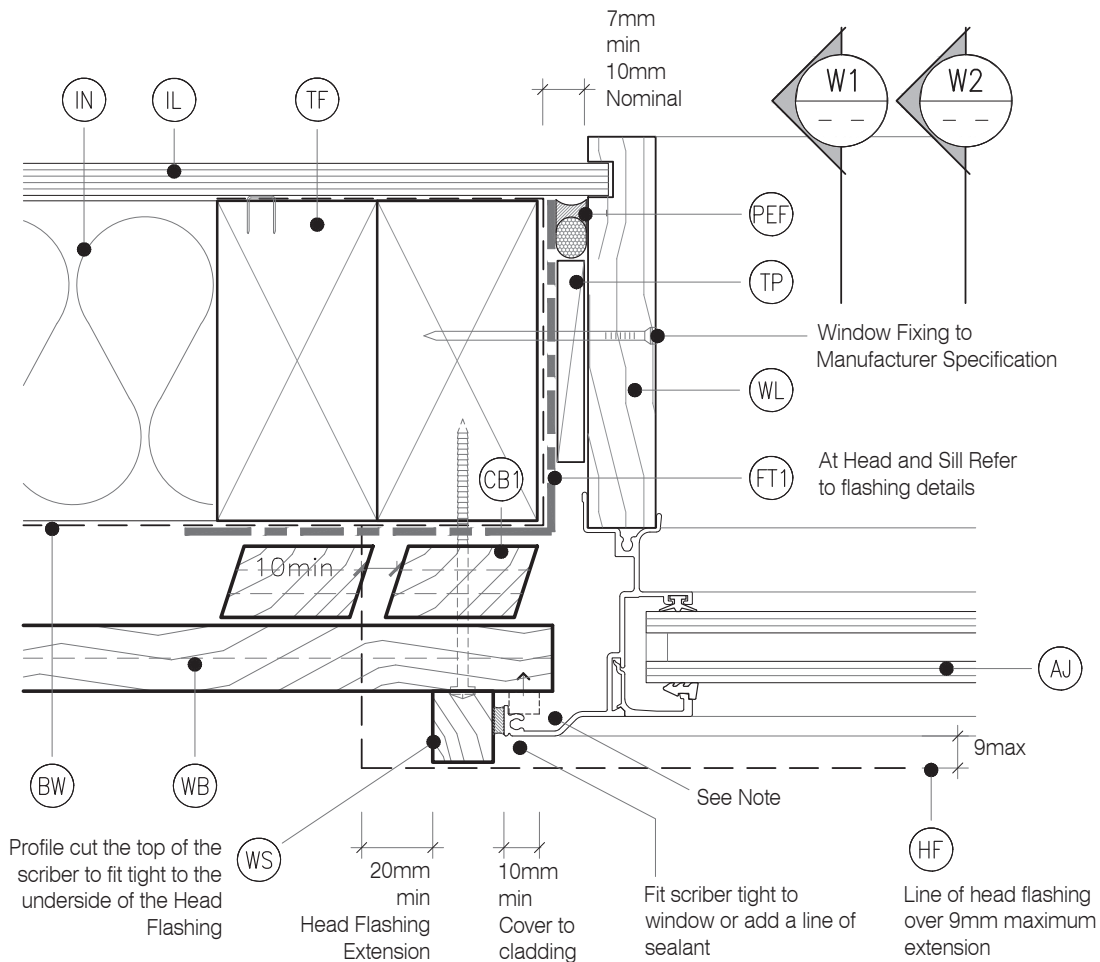


LEGEND :

- (AJ) ALUMINIUM JOINERY: Selected double glazed aluminium joinery. To E2/AS1 9.1.10
- (BW) BUILDING WRAP: Flexible Wall Underlay, As per NZBC E2/AS1 - Table 23, In extra high wind zones, Rigid Underlay required (9.1.7.2 E2/AS1)
- (CB1) CAVITY BATTEN - NON STRUCTURAL : Vertically installed JSC-U 45mm x 20mm Radiata Pine H3.2 treated, both face castellated and 18° bevelled edges. Site machined to allow for flashing.
- (CC) CAVITY CLOSURE: Cavity closure strip, positioned to give a 15mm min. drip edge to cladding
- (FT1) FLASHING TAPE: Flashing tape over wrap 70mm (50 min) turn-down required in corners only. Refer to Fig. 72 of NZBC E2/AS1

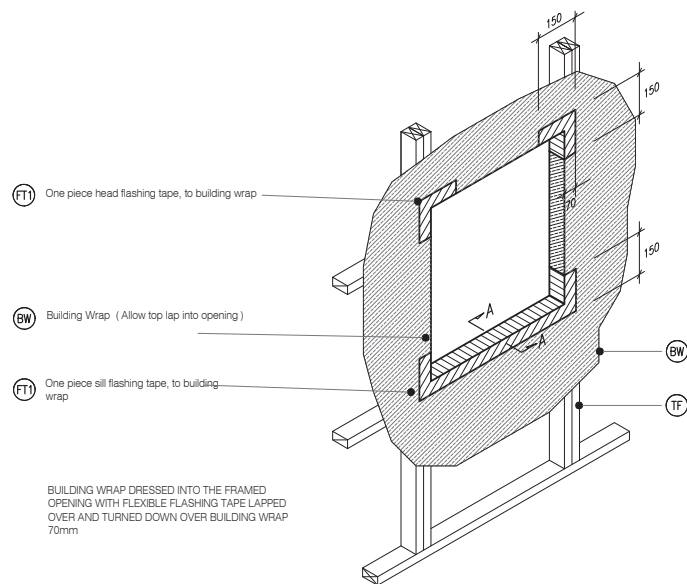
- (FT2) FLEXIBLE FLASHING TAPE: Flexible flashing tape lapped over aluminium head flashing or 2nd layer of Building Wrap, taped joint to top of timber frame
- (HF) HEAD FLASHING: Aluminium head flashing with minimum 15 degree fall, optional hemmed edges as per table 7 E2/AS1
- (IL) INTERNAL LINING: Selected Internal Lining
- (IN) INSULATION: Selected Insulation
- (PEF) PEF ROD BACKING: Foam backing rod with sealant to cavity in Window perimeter that forms a waterproof air-seal. (Sealant 2:1 Ratio)
- (TF) TIMBER FRAME: H1.2 min treated timber framing

- (TP) TIMBER PACKER: Tan H3.2 Treated Packer
- (WL) WINDOW LINER: As Specified
- (WB) WEATHER BOARD: JSC Rusticated Weatherboard
- (WH) WEATHERHEAD: (OPTIONAL) Selected JSC Horizontal batten above window as necessary to suit profile, shaped to shed water, sealant to back of head scribe
- (WS) WINDOW SCRIBER: Sealant to back of scribe and 75 x 3.15mm 316 Stainless Steel nail in 3mm predrilled hole.
- (WZ) WANZ SUPPORT: Provide window support as required by joinery manufacturer

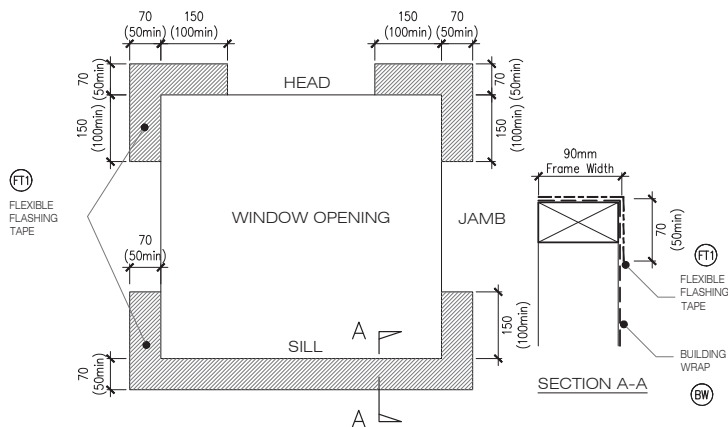


DETAIL NOTES :

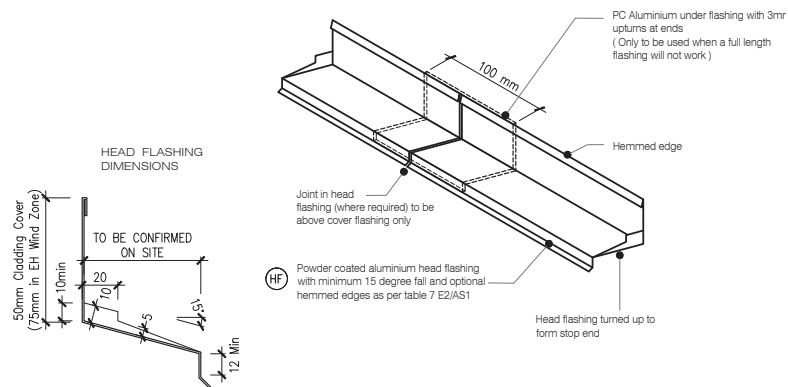
1. No Scribe Option : The Aluminium Joinery must sit hard against the back of the joinery flange and the timber weatherboards with a E.P.S Compressible bond breaker foam seal between



W4 TYPICAL WINDOW OPENING (FLASHING TAPE)
RC13 SCALE : N.T.S



W5 FLEXIBLE BUILDING WRAP AT OPENING
RC13 SCALE : 1 / 5 @ A1, 1 / 10 @ A3



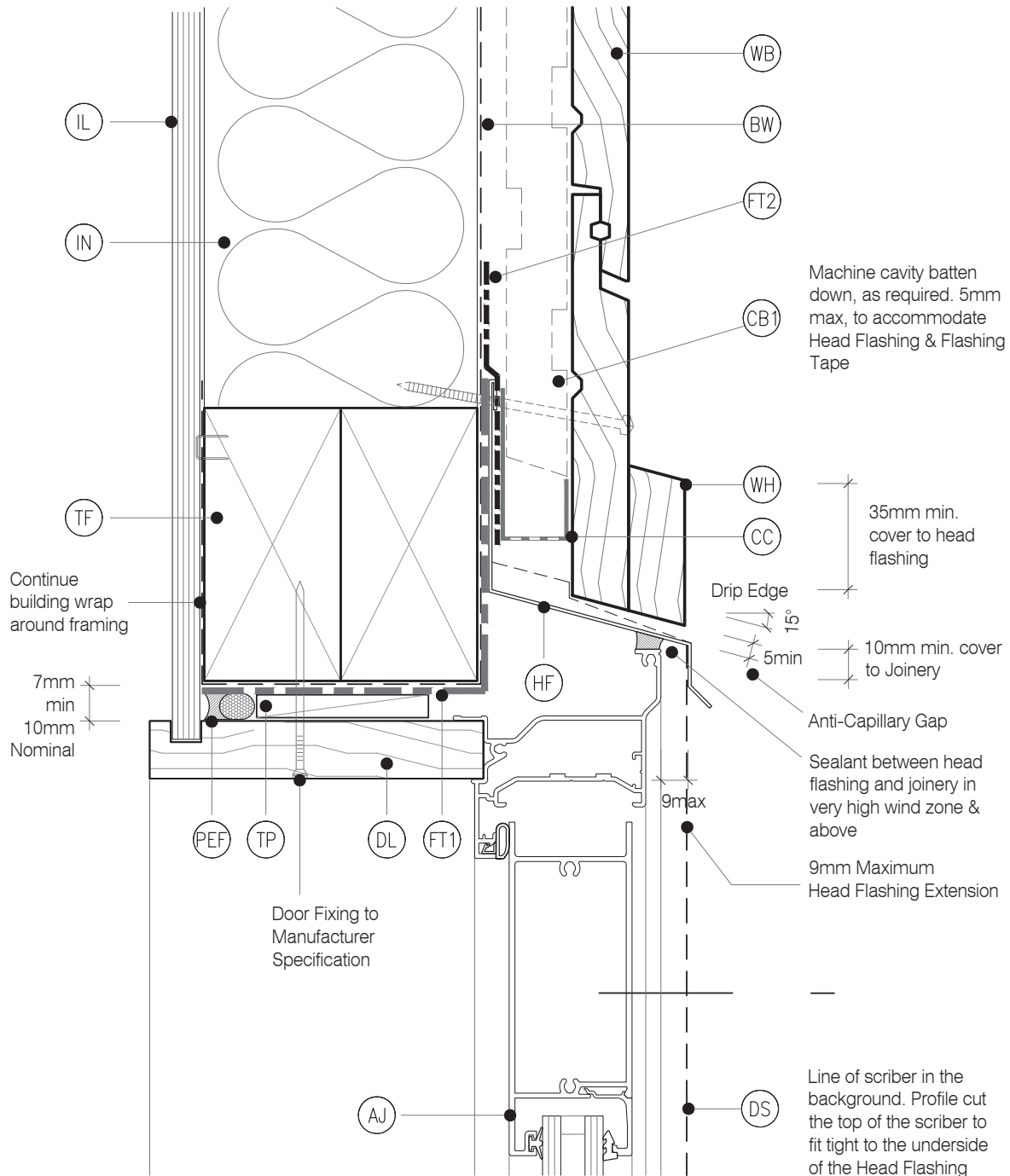
W6 TYPICAL HEAD & FLASHING JOINT
RC13 SCALE : 1 / 2 @ A1, 1 / 4 @ A3

LEGEND:

- (AJ) ALUMINIUM JOINERY: Selected double glazed aluminium joinery. To E2/AS1 9.1.10
- (BW) BUILDING WRAP: Flexible Wall Underlay, As per NZBC E2/AS1 - Table 23, In extra high wind zones, Rigid Underlay required (9.1.7.2 E2/AS1)
- (CB1) CAVITY BATTEN - NON STRUCTURAL: Vertically installed JSC-U 45mm x 20mm Radiata Pine H3.2 treated, both face castellated and 18° bevelled edges. Site machined to allow for flashing.
- (CC) CAVITY CLOSURE: Cavity closure strip, positioned to give a 15mm Min drip edge to cladding
- (DS) FLASHING TAPE: Flashing tape over wrap 70mm (50 min) turn-down required in corners only. Refer to Fig. 72 of NZBC E2/AS1
- (FT1) DOOR SCRIBER: Sealant to back of scribe and 75 x 3.15mm 316 Stainless Steel nail in 3mm predrilled hole.

- (FT2) FLEXIBLE FLASHING TAPE: Flexible flashing tape lapped over aluminium head flashing or 2nd layer of Building Wrap, taped joint to top of timber frame
- (HF) HEAD FLASHING: Aluminium head flashing with minimum 15 degree fall, optional hemmed edges as per table 7 E2/AS1
- (IL) INTERNAL LINING: Selected Internal Lining
- (IN) INSULATION: Selected Insulation
- (PEF) PEF ROD BACKING: Foam backing rod with sealant to cavity in Window perimeter that forms a waterproof air-seal. (Sealant 2:1 Ratio)
- (TF) TIMBER FRAME: H1.2 min treated timber framing

- (TP) TIMBER PACKER: Tan H3.2 Treated Packer
- (WB) WEATHER BOARD: Selected JSC Rusticated Weatherboard
- (DL) DOOR LINER: As Specified
- (WB) WEATHER BOARD: JSC Rusticated Weatherboard
- (WH) WEATHERHEAD: (OPTIONAL) Selected JSC Horizontal batten above meter box as necessary to suit profile, shaped to shed water, sealant to back of head scribe
- (WZ) WANZ SUPPORT: Provide window support as required by joinery manufacturer

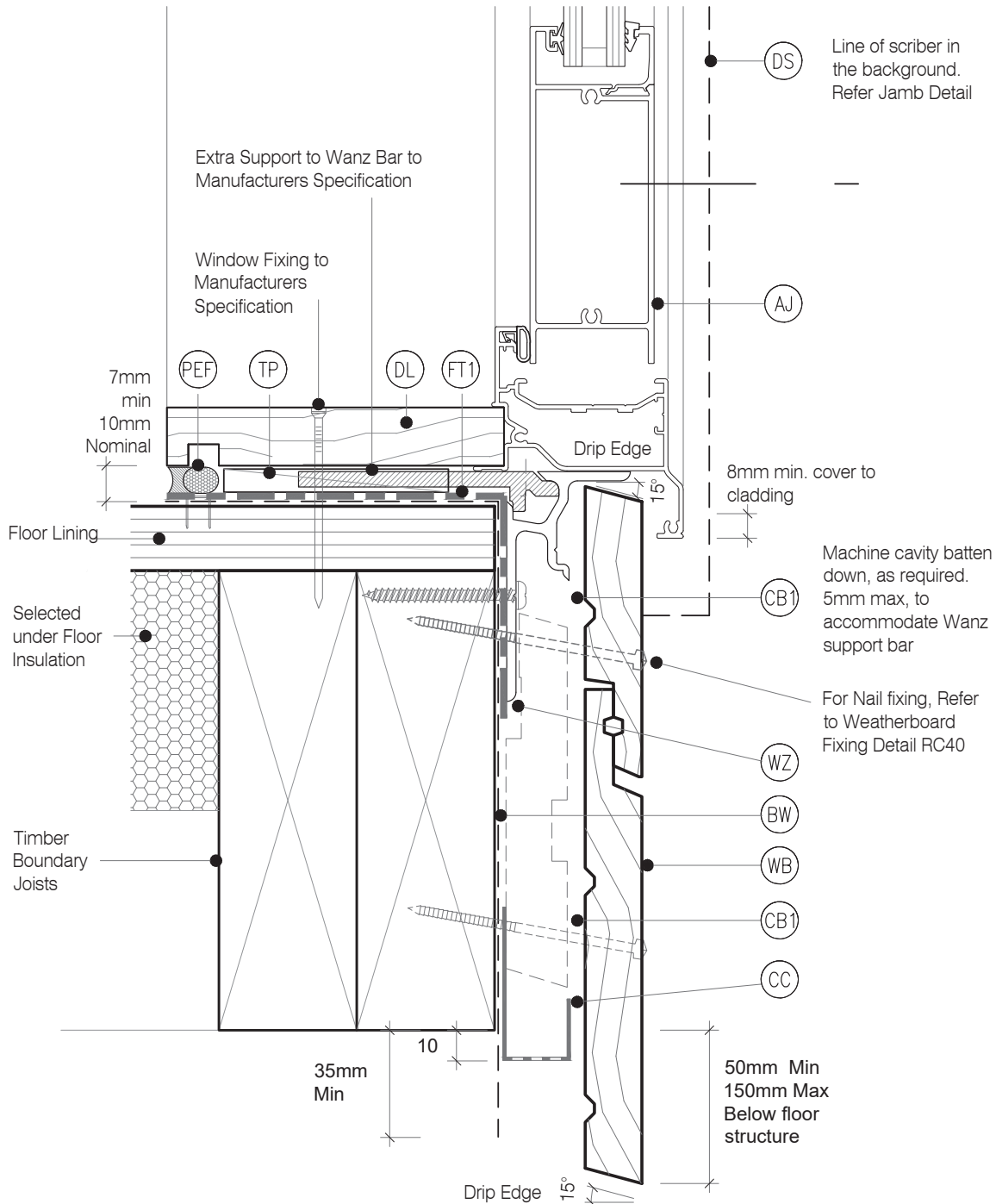


LEGEND:

- (AJ) ALUMINIUM JOINERY: Selected double glazed aluminium joinery. To E2/AS1 9.1.10
- (BW) BUILDING WRAP: Flexible Wall Underlay, As per NZBC E2/AS1 - Table 23, In extra high wind zones, Rigid Underlay required (9.1.7.2 E2/AS1)
- (CB1) CAVITY BATTEN - NON STRUCTURAL : Vertically installed JSC-U 45mm x 20mm Radiata Pine H3.2 treated, both face castellated and 18° bevelled edges. Site machined to allow for flashing.
- (CC) CAVITY CLOSURE: Cavity closure strip, positioned to give a 15mm Min drip edge to cladding
- (DS) FLASHING TAPE: Flashing tape over wrap 70mm (50 min) turn-down required in corners only. Refer to Fig. 72 of NZBC E2/AS1
- (FT1) DOOR SCRIBER: Sealant to back of scribe and 75 x 3.15mm 316 Stainless Steel nail in 3mm predrilled hole.

- (FT2) FLEXIBLE FLASHING TAPE: Flexible flashing tape lapped over aluminium head flashing or 2nd layer of Building Wrap, taped joint to top of timber frame
- (HF) HEAD FLASHING: Aluminium head flashing with minimum 15 degree fall, optional hemmed edges as per table 7 E2/AS1
- (IL) INTERNAL LINING: Selected Internal Lining
- (IN) INSULATION: Selected Insulation
- (PEF) PEF ROD BACKING: Foam backing rod with sealant to cavity in Window perimeter that forms a waterproof air-seal. (Sealant 2:1 Ratio)
- (TF) TIMBER FRAME: H1.2 min treated timber framing

- (TP) TIMBER PACKER: Tan H3.2 Treated Packer
- (WB) WEATHER BOARD: Selected JSC Rusticated Weatherboard
- (DL) DOOR LINER: As Specified
- (WB) WEATHER BOARD: JSC Rusticated Weatherboard
- (WH) WEATHERHEAD: (OPTIONAL) Selected JSC Horizontal batten above meter box as necessary to suit profile, shaped to shed water, sealant to back of head scribe
- (WZ) WANZ SUPPORT: Provide window support as required by joinery manufacturer

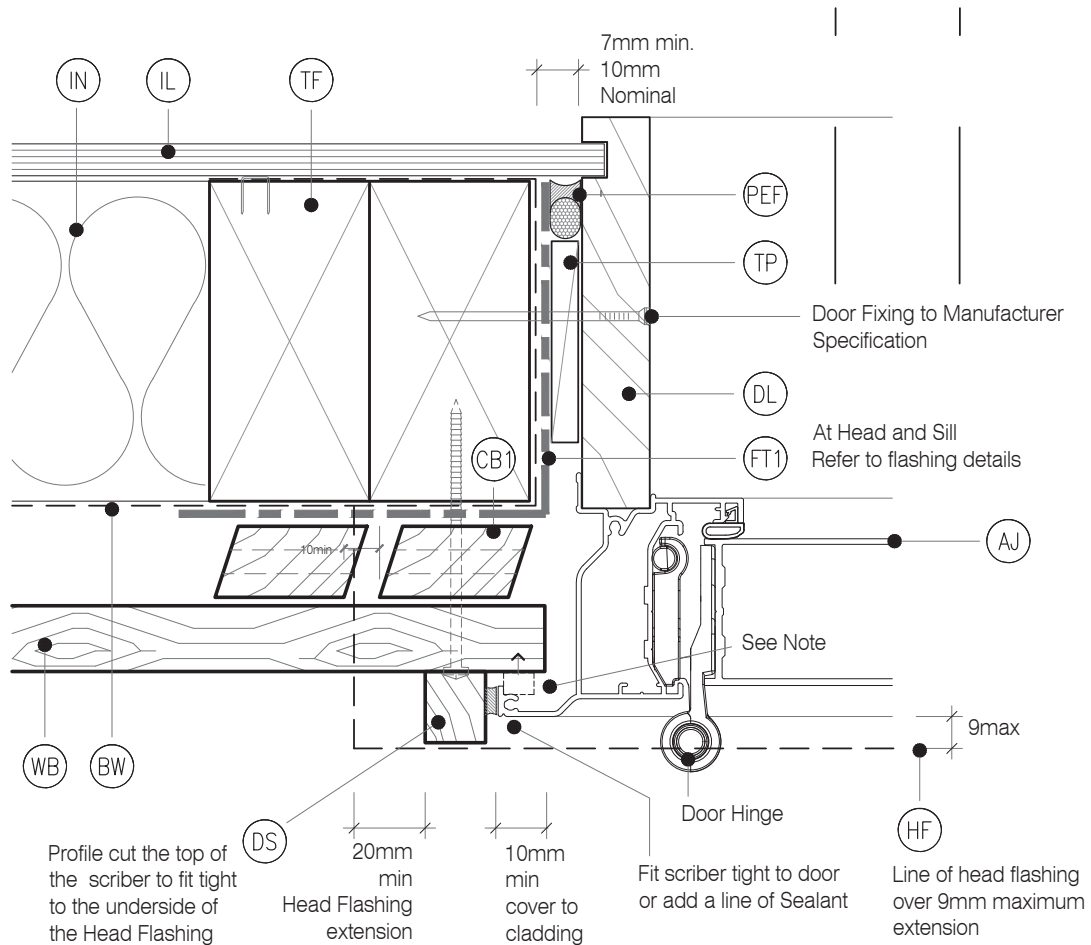


LEGEND :

- (AJ) ALUMINIUM JOINERY: Selected double glazed aluminium joinery. To E2/AS1 9.1.10
- (BW) BUILDING WRAP: Flexible Wall Underlay, As per NZBC E2/AS1 - Table 23, In extra high wind zones, Rigid Underlay required (9.1.7.2 E2/AS1)
- (CB1) CAVITY BATTEN - NON STRUCTURAL : Vertically installed JSC-U 45mm x 20mm Radiata Pine H3.2 treated, both face castellated and 18° bevelled edges. Site machined to allow for flashing.
- (CC) CAVITY CLOSURE: Cavity closure strip, positioned to give a 15mm Min drip edge to cladding
- (DS) FLASHING TAPE: Flashing tape over wrap 70mm (50 min) turn-down required in corners only. Refer to Fig. 72 of NZBC E2/AS1
- (FT1) DOOR SCRIBER: Sealant to back of scribe and 75 x 3.15mm 316 Stainless Steel nail in 3mm predrilled hole.

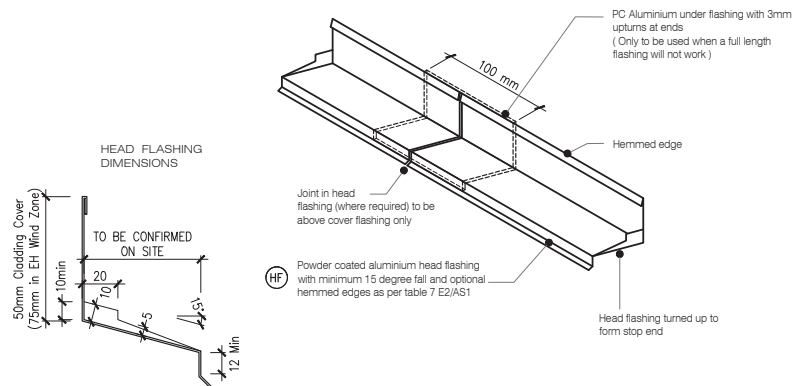
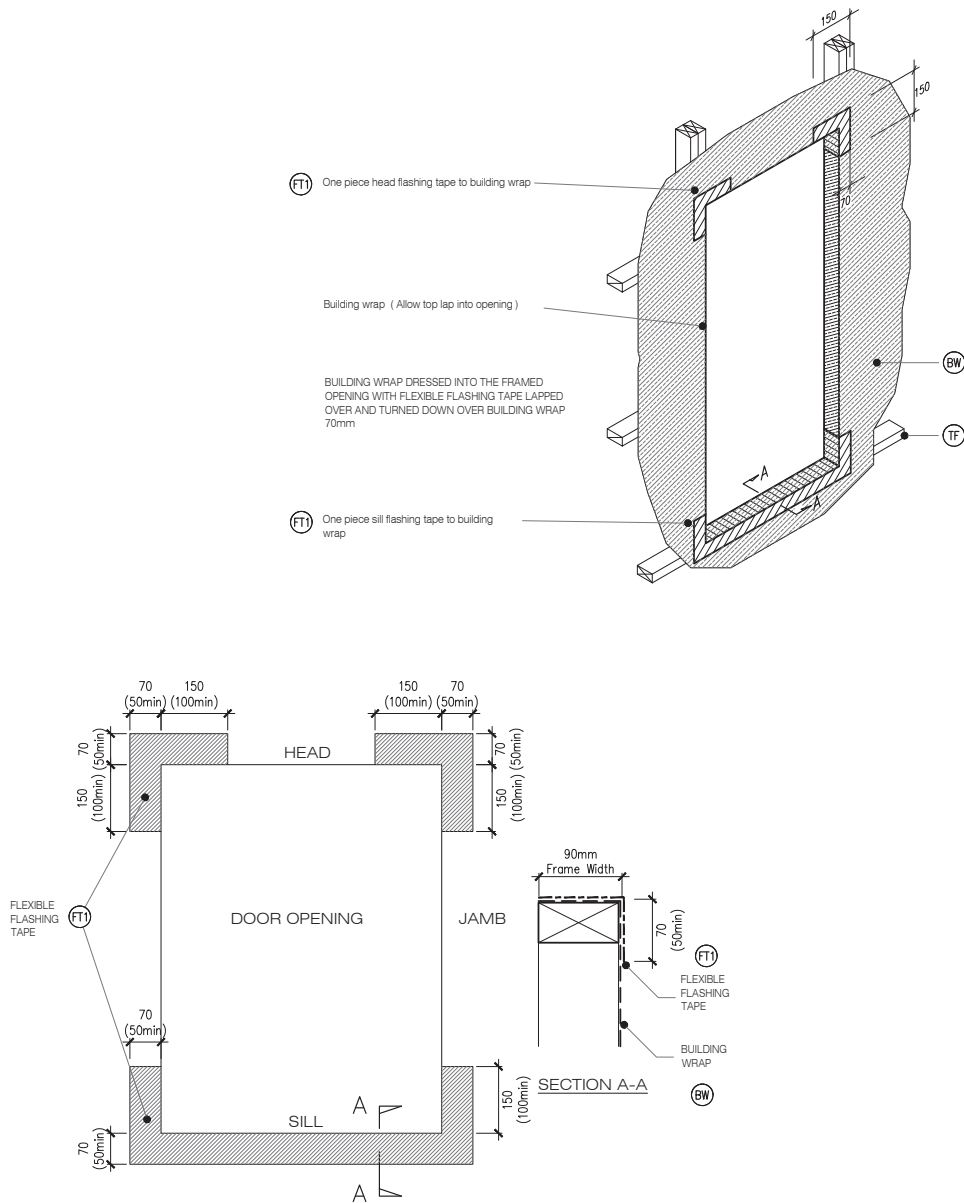
- (FT2) FLEXIBLE FLASHING TAPE: Flexible flashing tape lapped over aluminium head flashing or 2nd layer of Building Wrap, taped joint to top of timber frame
- (HF) HEAD FLASHING: Aluminium head flashing with minimum 15 degree fall, optional hemmed edges as per table 7 E2/AS1
- (IL) INTERNAL LINING: Selected Internal Lining
- (IN) INSULATION: Selected Insulation
- (PEF) PEF ROD BACKING: Foam backing rod with sealant to cavity in Window perimeter that forms a waterproof air-seal. (Sealant 2:1 Ratio)
- (TF) TIMBER FRAME: H1.2 min treated timber framing

- (TP) TIMBER PACKER: Tan H3.2 Treated Packer
- (WB) WEATHER BOARD: Selected JSC Rusticated Weatherboard
- (DL) DOOR LINER: As Specified
- (WB) WEATHER BOARD: JSC Rusticated Weatherboard
- (WH) WEATHERHEAD: (OPTIONAL) Selected JSC Horizontal batten above meter box as necessary to suit profile, shaped to shed water, sealant to back of head scribe
- (WZ) WANZ SUPPORT: Provide window support as required by joinery manufacturer



DETAIL NOTES :

1. No Scribe Option : The Aluminium Joinery must sit hard against the back of the joinery flange and the timber weatherboards with a E.P.S Compressible bond breaker foam seal between



ONE PIECE PC ALUMINIUM HEAD FLASHING 15° SLOPE WITH 10mm minimum COVER TO JOINERY EXTEND 30mm min EITHER SIDE OF JOINERY WITH STOP ENDS

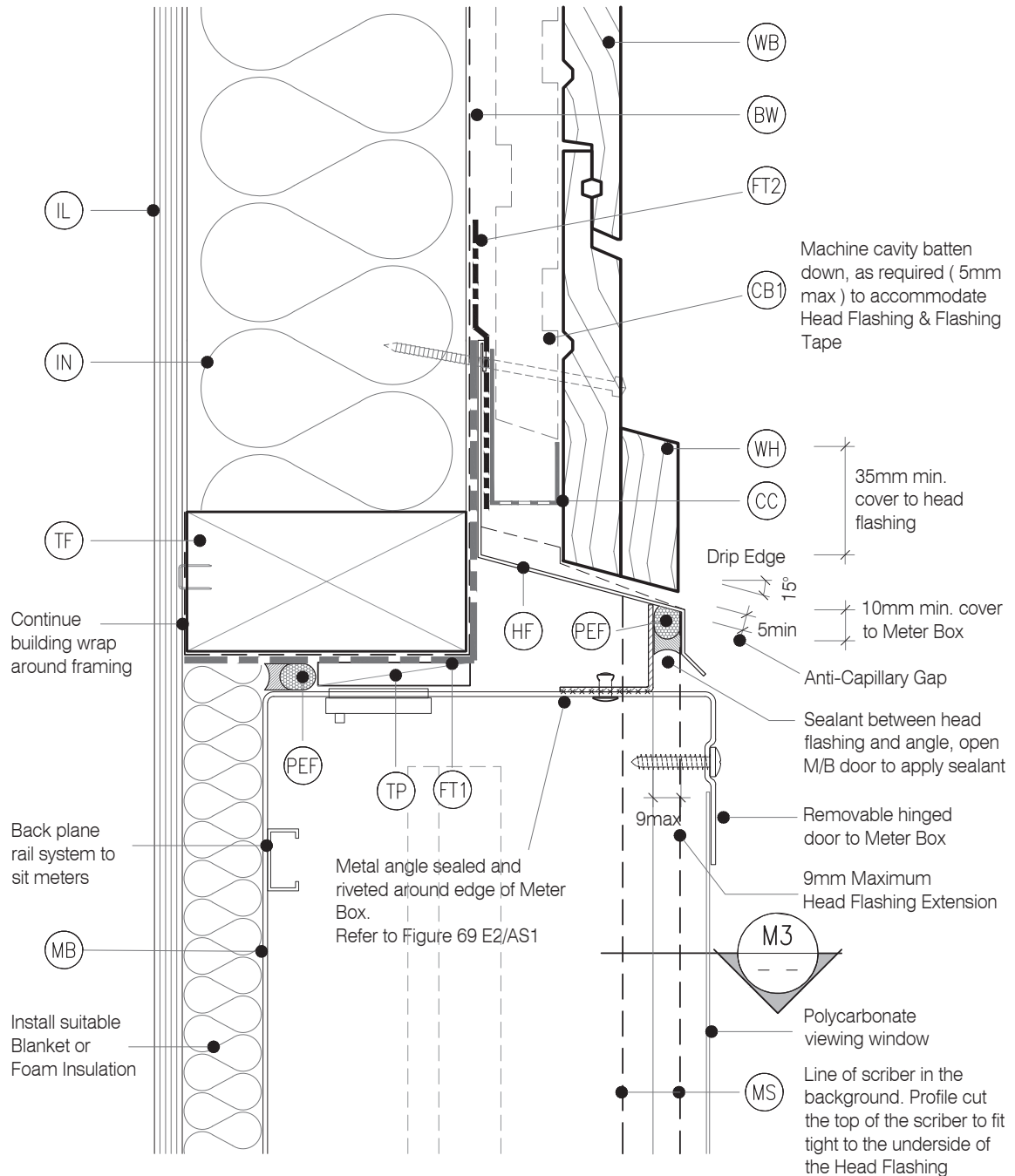


LEGEND:

- (BW) BUILDING WRAP: Flexible Wall Underlay, As per NZBC E2/AS1 - Table 23, In extra high wind zones, Rigid Underlay required (9.1.7.2 E2/AS1)
- (CB1) CAVITY BATTEN - NON STRUCTURAL : Horizontally installed JSC-U 45mm x 20mm Radiata Pine H3.2 treated, both face castellated and 18° bevelled edges.
- (CC) CAVITY CLOSURE: Cavity closure strip, positioned to give a 15mm minimum drip edge to cladding
- (FT1) FLASHING TAPE: Flashing tape over wrap 70mm (50 min) turn-down required in corners only. Refer to Fig. 72 of NZBC E2/AS1
- (FT2) FLEXIBLE FLASHING TAPE: Flexible flashing tape lapped over aluminium head flashing or 2nd layer of Building Wrap, taped joint to top of timber frame

- (HF) HEAD FLASHING: Aluminium head flashing with minimum 15 degree fall, optional hemmed edges as per table 7 E2/AS1
- (IL) INTERNAL LINING: Selected Internal Lining
- (IN) INSULATION: Selected Insulation
- (PEF) PEF ROD BACKING: Foam backing rod with sealant to cavity in Window perimeter that forms a waterproof air-seal. (Sealant 2:1 Ratio)
- (MB) METER BOX: Electrical meter box, with removable hinged door and polycarbonate viewing window
- (MS) METER BOX SCRIBER: Sealant to back of scriber and 75 x 3.15mm 316 Stainless Steel nail in 3mm predrilled hole.

- (TF) TIMBER FRAME: H1.2 min treated timber framing
- (TP) TIMBER PACKER: Tan H3.2 Treated Packer
- (WB) WEATHER BOARD: Selected JSC Rusticated Weatherboard
- (WL) WINDOW LINER: As Specified
- (WH) WEATHERHEAD: (OPTIONAL) Selected JSC Horizontal batten above meter box as necessary to suit profile, shaped to shed water, sealant to back of head scriber

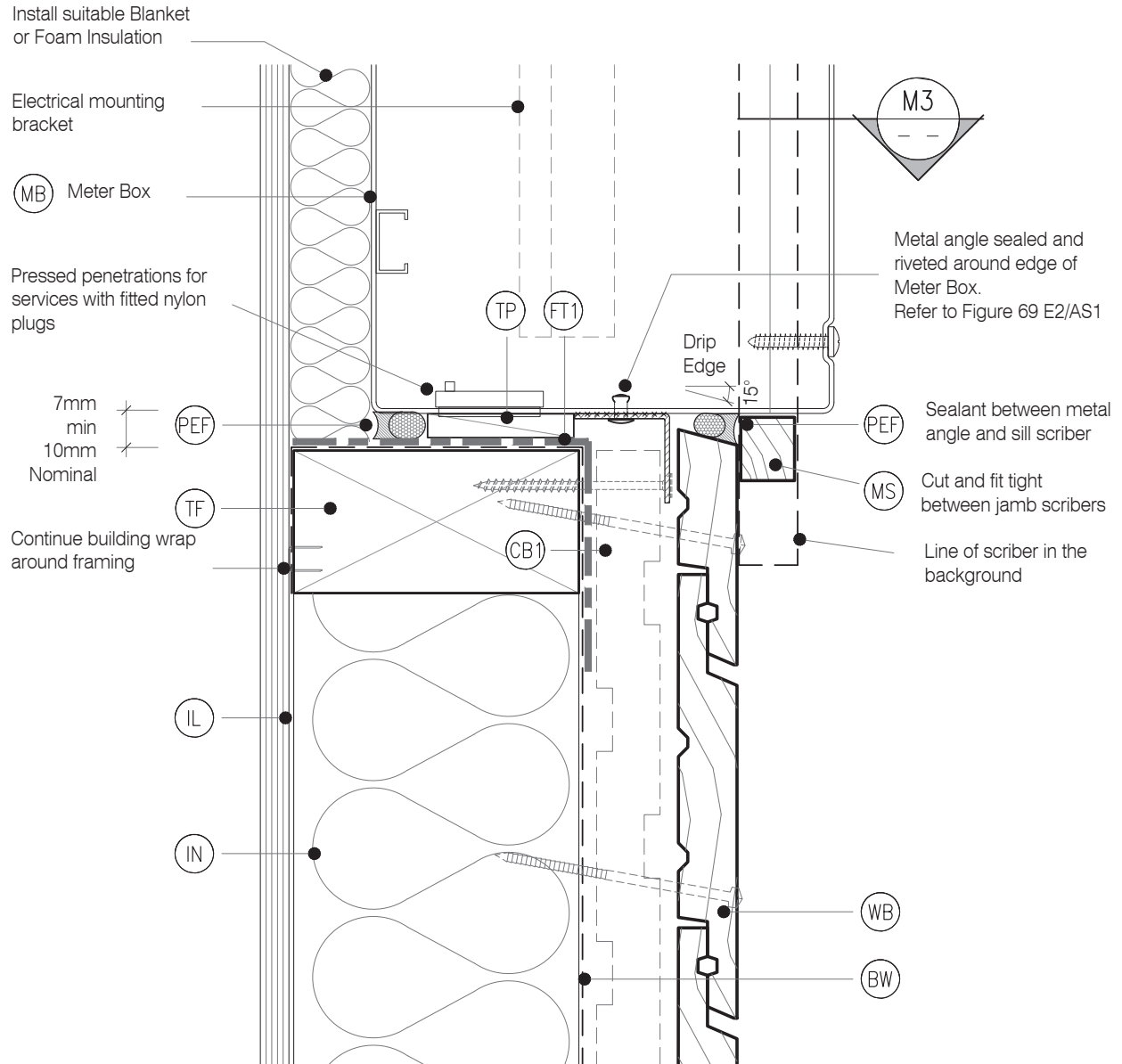


LEGEND :

- (BW) BUILDING WRAP: Flexible Wall Underlay, As per NZBC E2/AS1 - Table 23, In extra high wind zones, Rigid Underlay required (9.1.7.2 E2/AS1)
- (CB1) CAVITY BATTEN - NON STRUCTURAL : Horizontally installed JSC-U 45mm x 20mm Radiata Pine H3.2 treated, both face castellated and 18° bevelled edges.
- (CC) CAVITY CLOSURE: Cavity closure strip, positioned to give a 15mm minimum drip edge to cladding
- (FT1) FLASHING TAPE: Flashing tape over wrap 70mm (50 min) turn-down required in corners only. Refer to Fig. 72 of NZBC E2/AS1
- (FT2) FLEXIBLE FLASHING TAPE: Flexible flashing tape lapped over aluminium head flashing or 2nd layer of Building Wrap, taped joint to top of timber frame

- (HF) HEAD FLASHING: Aluminium head flashing with minimum 15 degree fall, optional hemmed edges as per table 7 E2/AS1
- (IL) INTERNAL LINING: Selected Internal Lining
- (IN) INSULATION: Selected Insulation
- (PEF) PEF ROD BACKING: Foam backing rod with sealant to cavity in Window perimeter that forms a waterproof air-seal. (Sealant 2:1 Ratio)
- (MB) METER BOX: Electrical meter box, with removable hinged door and polycarbonate viewing window
- (MS) METER BOX SCRIBER: Sealant to back of scriber and 75 x 3.15mm 316 Stainless Steel nail in 3mm predrilled hole.

- (TF) TIMBER FRAME: H1.2 min treated timber framing
- (TP) TIMBER PACKER: Tan H3.2 Treated Packer
- (WB) WEATHER BOARD: Selected JSC Rusticated Weatherboard
- (WL) WINDOW LINER: As Specified
- (WH) WEATHERHEAD: (OPTIONAL) Selected JSC Horizontal batten above meter box as necessary to suit profile, shaped to shed water, sealant to back of head scriber

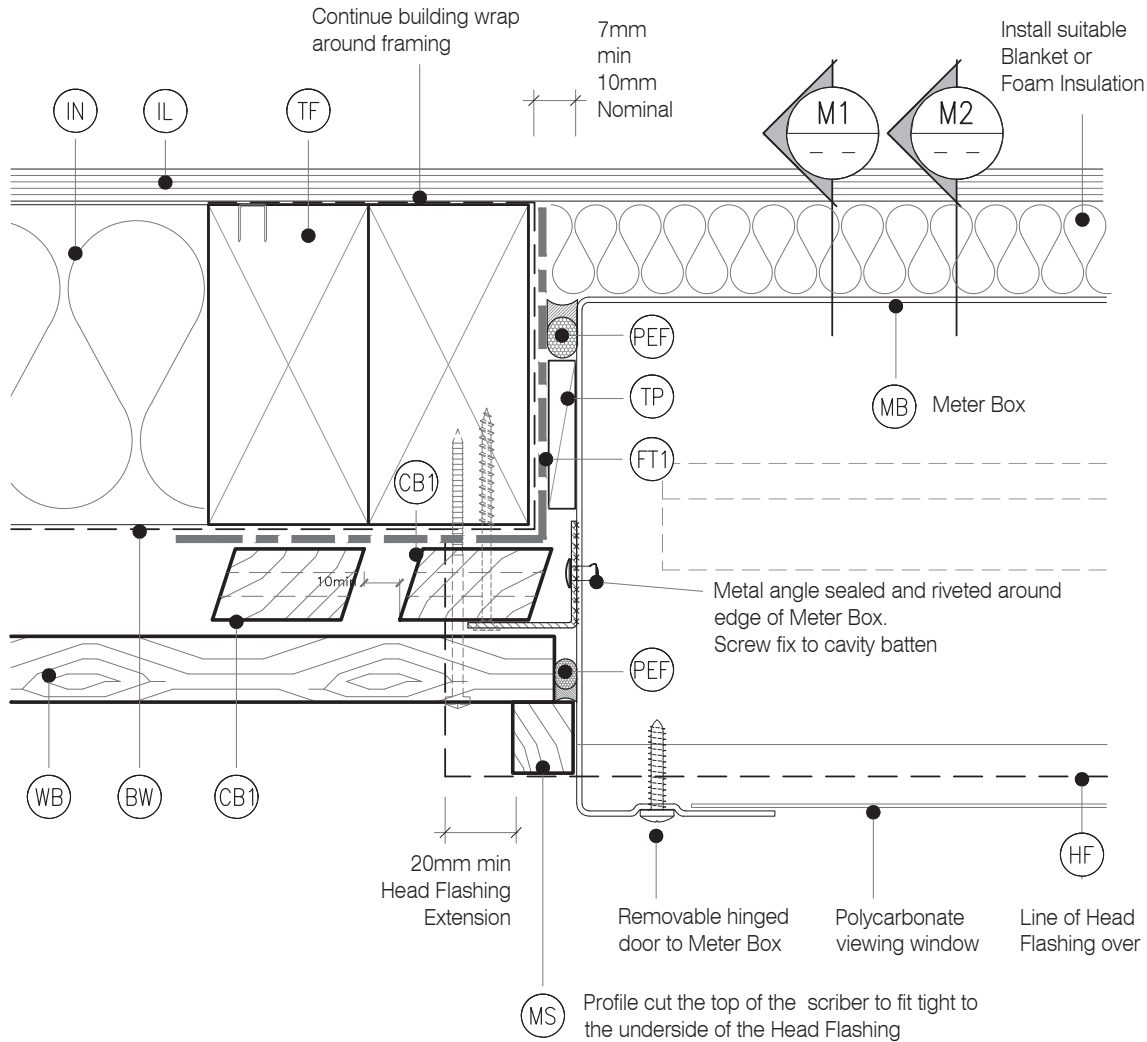


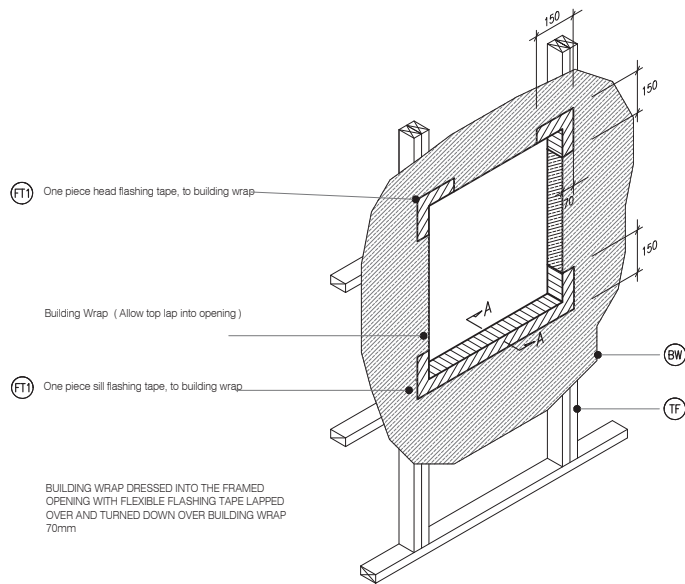
LEGEND:

- (BW) BUILDING WRAP: Flexible Wall Underlay, As per NZBC E2/AS1 - Table 23, In extra high wind zones, Rigid Underlay required (9.1.7.2 E2/AS1)
- (CB1) CAVITY BATTEN - NON STRUCTURAL : Horizontally installed JSC-U 45mm x 20mm Radiata Pine H3.2 treated, both face castellated and 18° bevelled edges.
- (CC) CAVITY CLOSURE: Cavity closure strip, positioned to give a 15mm minimum drip edge to cladding
- (FT1) FLASHING TAPE: Flashing tape over wrap 70mm (50 min) turn-down required in corners only. Refer to Fig. 72 of NZBC E2/AS1
- (FT2) FLEXIBLE FLASHING TAPE: Flexible flashing tape lapped over aluminium head flashing or 2nd layer of Building Wrap, taped joint to top of timber frame

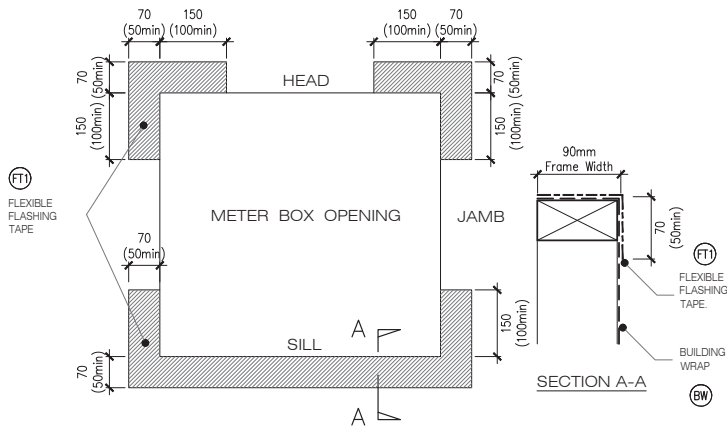
- (HF) HEAD FLASHING: Aluminium head flashing with minimum 15 degree fall, optional hemmed edges as per table 7 E2/AS1
- (IL) INTERNAL LINING: Selected Internal Lining
- (IN) INSULATION: Selected Insulation
- (PEF) PEF ROD BACKING: Foam backing rod with sealant to cavity in Window perimeter that forms a waterproof air-seal. (Sealant 2:1 Ratio)
- (MB) METER BOX: Electrical meter box, with removable hinged door and polycarbonate viewing window
- (MS) METER BOX SCRIBER: Sealant to back of scriber and 75 x 3.15mm 316 Stainless Steel nail in 3mm predrilled hole.

- (TF) TIMBER FRAME: H1.2 min treated timber framing
- (TP) TIMBER PACKER: Tan H3.2 Treated Packer
- (WB) WEATHER BOARD: Selected JSC Rusticated Weatherboard
- (WL) WINDOW LINER: As Specified
- (WH) WEATHERHEAD: (OPTIONAL) Selected JSC Horizontal batten above meter box as necessary to suit profile, shaped to shed water, sealant to back of head scriber

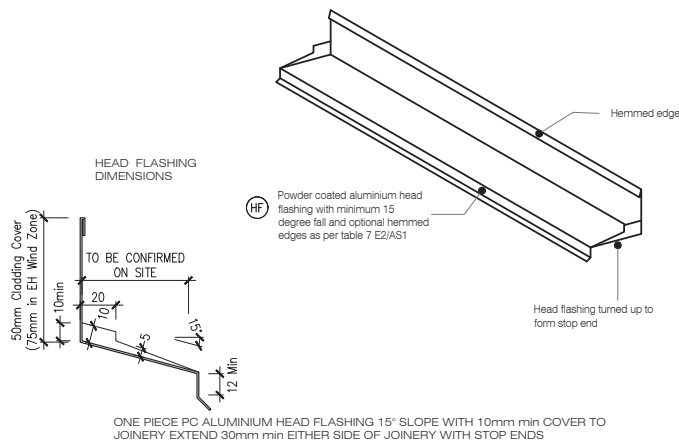




M4 TYPICAL METER BOX OPENING (FLASHING TAPE)
RC33 SCALE : N.T.S



M5 FLEXIBLE BUILDING WRAP AT OPENING
RC33 SCALE : 1 / 5 @ A1, 1 / 10 @ A3



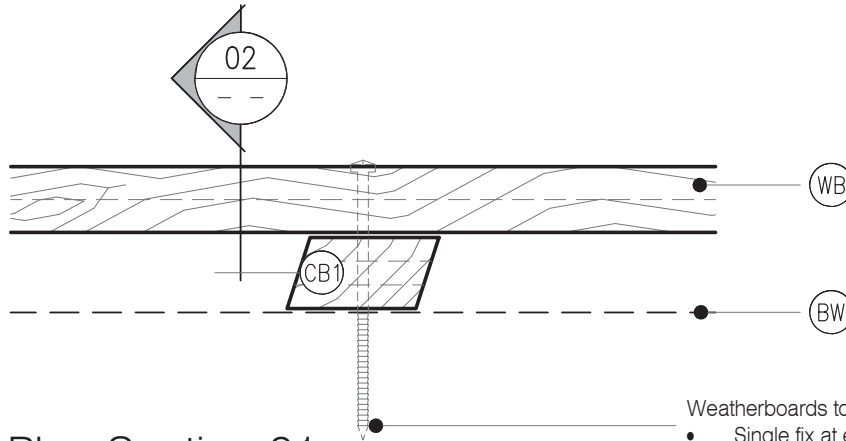
M6 TYPICAL HEAD & FLASHING JOINT
RC33 SCALE : 1 / 2 @ A1, 1 / 4 @ A3

LEGEND:

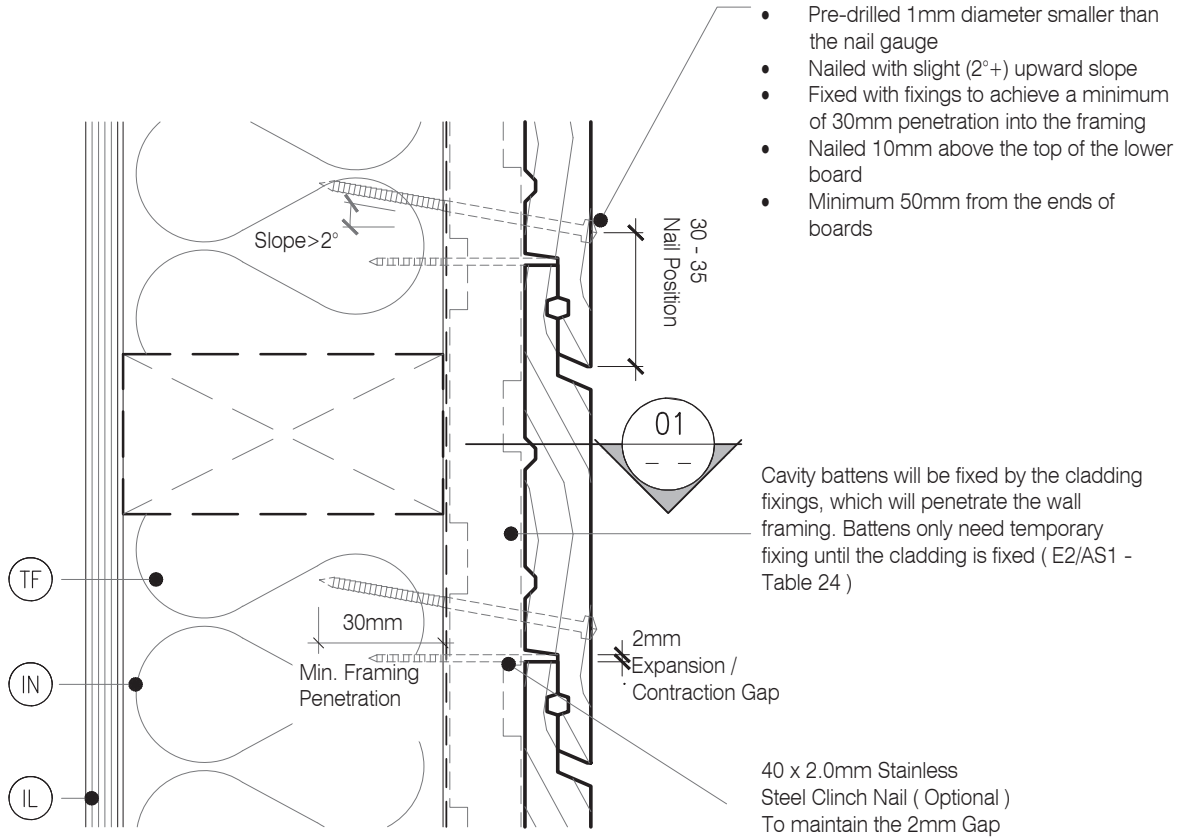
- (BF) BACK FLASHING: Minimum 100mm Polypropylene or PVC rear flashing to provide 50mm cover past the scarf joint on each side
- (BW) BUILDING WRAP: Flexible Wall Underlay, as per NZBC E2/AS1 - Table 23. In extra high wind zones, Rigid Underlay required (9.1.7.2 E2/AS1)

- (CC) CAVITY CLOSURE: Cavity closure strip, positioned to give a 15mm minimum drip edge to cladding
- (FT4) FLEXIBLE FLASHING TAPE: Flexible flashing tape lapped into corner, Refer NZBC E2/AS1 4.3.1.1 Flashing tape is recommended due to movement that may occur in corners. Not required by E2/AS1
- (IL) INTERNAL LINING: Selected Internal Lining

- (IN) INSULATION: Selected Insulation
- (TF) TIMBER FRAME: H1.2 min treated timber framing
- (WB) WEATHERBOARD: Selected JSC Rusticated Weatherboard



Plan Section 01



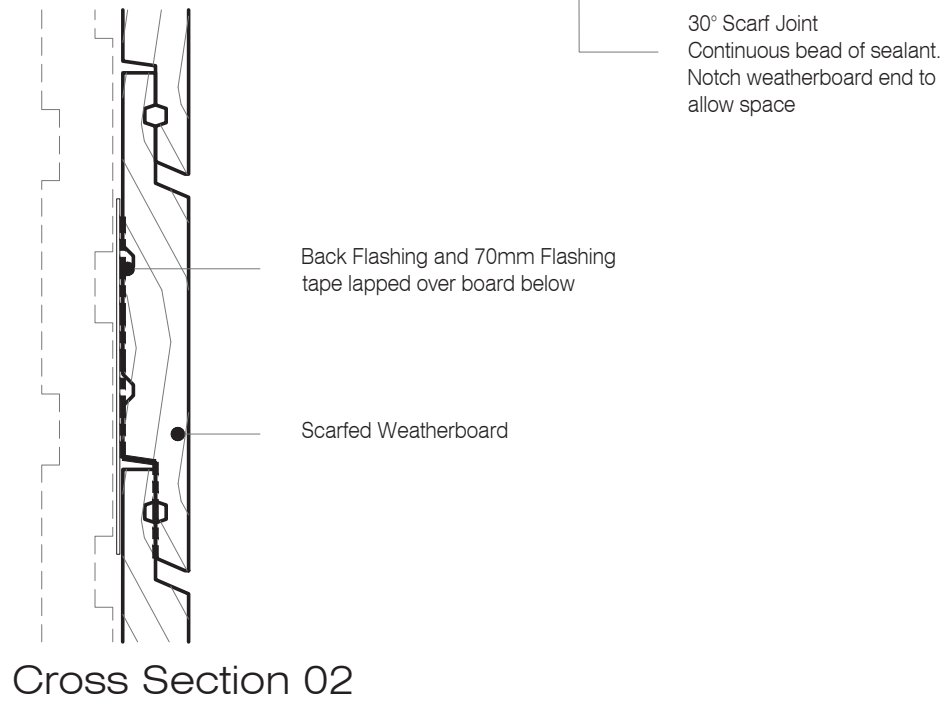
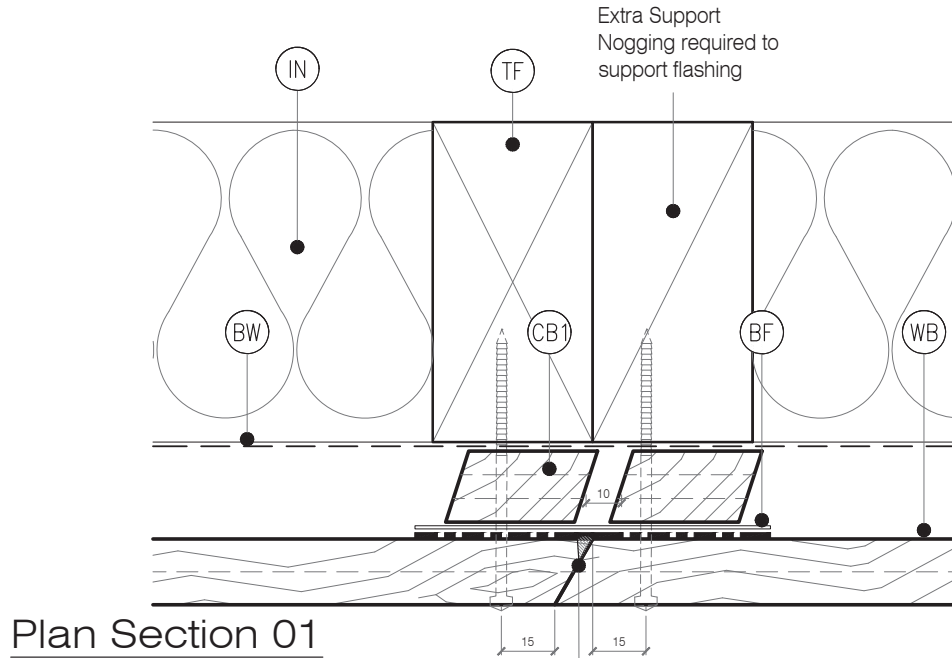
Cross Section 02

LEGEND:

- BF** BACK FLASHING: Minimum 100mm Polypropylene or PVC rear flashing to provide 50mm cover past the scarf joint on each side
- BW** BUILDING WRAP: Flexible Wall Underlay, as per NZBC E2/AS1 - Table 23. In extra high wind zones, Rigid Underlay required (9.1.7.2 E2/AS1)

- CC** CAVITY CLOSURE: Cavity closure strip, positioned to give a 15mm minimum drip edge to cladding
- FT4** FLEXIBLE FLASHING TAPE: Flexible flashing tape lapped into corner, Refer NZBC E2/AS1 4.3.11 Flashing tape is recommended due to movement that may occur in corners. Not required by E2/AS1
- IL** INTERNAL LINING: Selected Internal Lining

- IN** INSULATION: Selected Insulation
- TF** TIMBER FRAME: H1.2 min treated timber framing
- WB** WEATHERBOARD: Selected JSC Rusticated Weatherboard



LEGEND:

(BF) BACK FLASHING: Minimum 100mm Polypropylene or PVC rear flashing to provide 50mm cover past the scarf joint on each side

(BW) BUILDING WRAP: Flexible Wall Underlay, as per NZBC E2/AS1 - Table 23. In extra high wind zones, Rigid Underlay required (9.1.7.2 E2/AS1)

(CC) CAVITY CLOSURE: Cavity closure strip, positioned to give a 15mm minimum drip edge to cladding

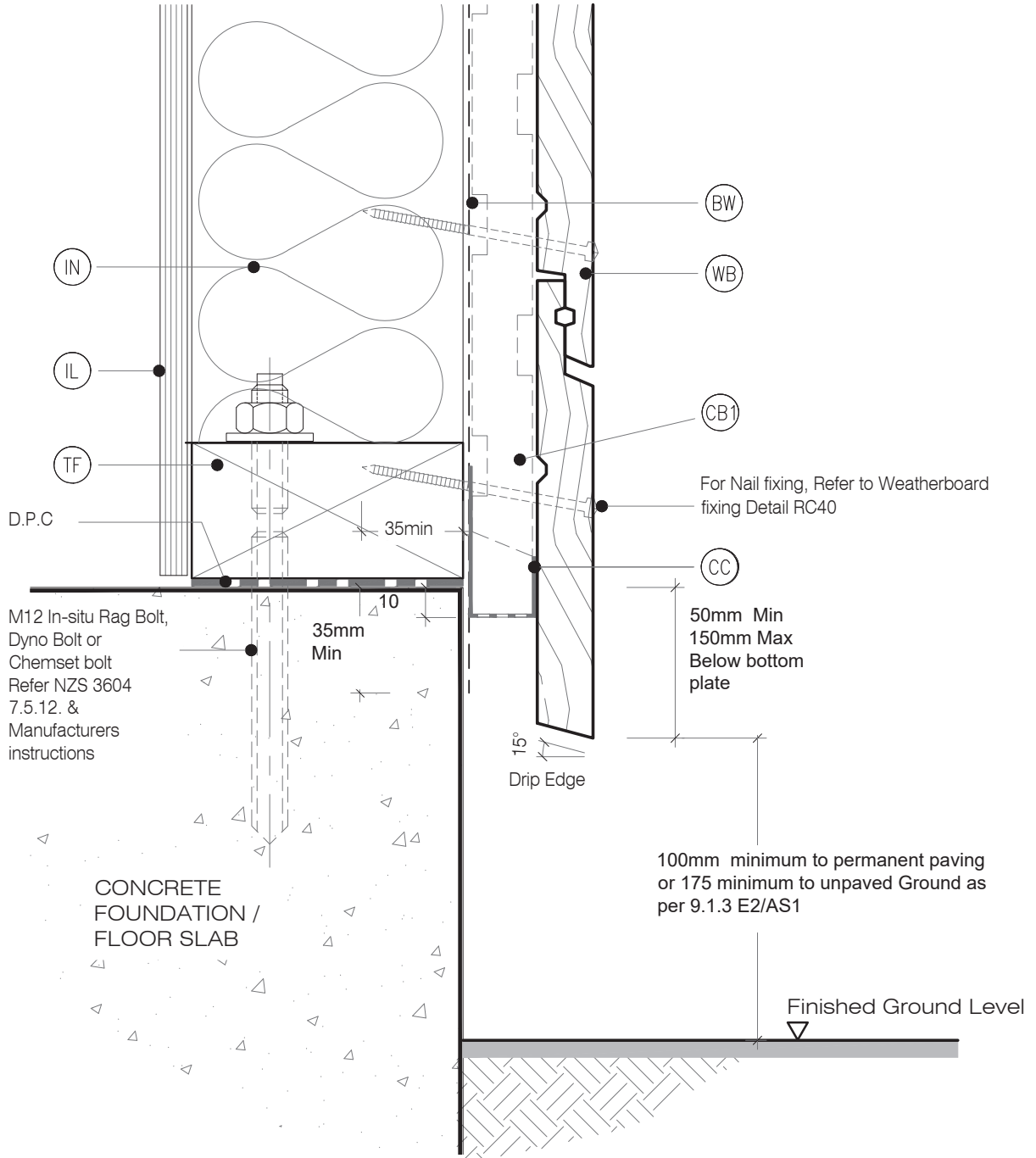
(FT4) FLEXIBLE FLASHING TAPE: Flexible flashing tape lapped into corner, Refer NZBC E2/AS1 4.3.11 Flashing tape is recommended due to movement that may occur in corners. Not required by E2/AS1

(IL) INTERNAL LINING: Selected Internal Lining

(IN) INSULATION: Selected Insulation

(TF) TIMBER FRAME: H1.2 min treated timber framing

(WB) WEATHERBOARD: Selected JSC Rusticated Weatherboard



LEGEND:

(BF) BACK FLASHING: Minimum 100mm Polypropylene or PVC rear flashing to provide 50mm cover past the scarf joint on each side

(BW) BUILDING WRAP: Flexible Wall Underlay, as per NZBC E2/AS1 - Table 23. In extra high wind zones, Rigid Underlay required (9.1.7.2 E2/AS1)

(CC) CAVITY CLOSURE: Cavity closure strip, positioned to give a 15mm minimum drip edge to cladding

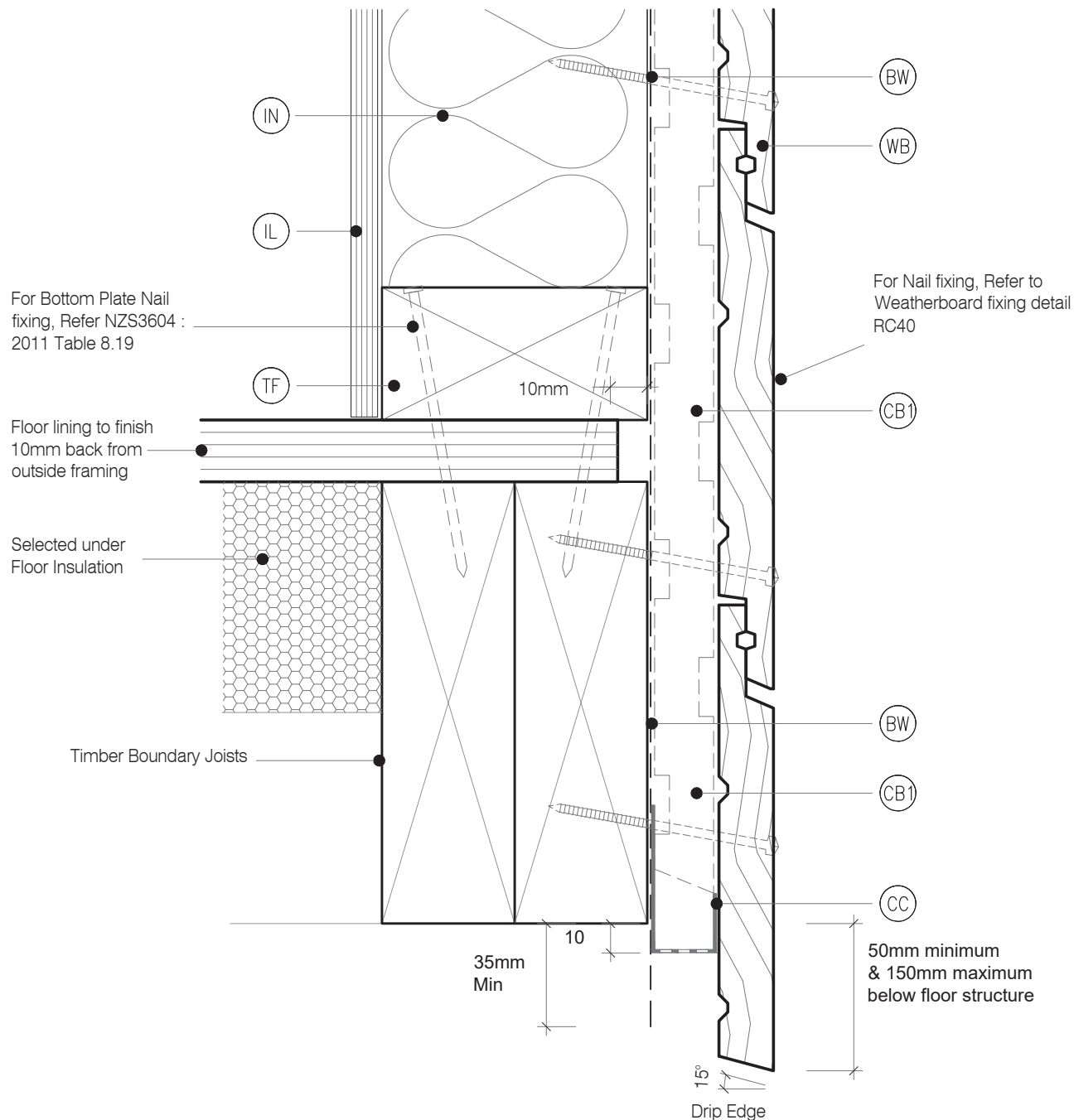
(FT4) FLEXIBLE FLASHING TAPE: Flexible flashing tape lapped into corner, Refer NZBC E2/AS1 4.3.11 Flashing tape is recommended due to movement that may occur in corners. Not required by E2/AS1

(IL) INTERNAL LINING: Selected Internal Lining

(IN) INSULATION: Selected Insulation

(TF) TIMBER FRAME: H1.2 min treated timber framing

(WB) WEATHERBOARD: Selected JSC Rusticated Weatherboard

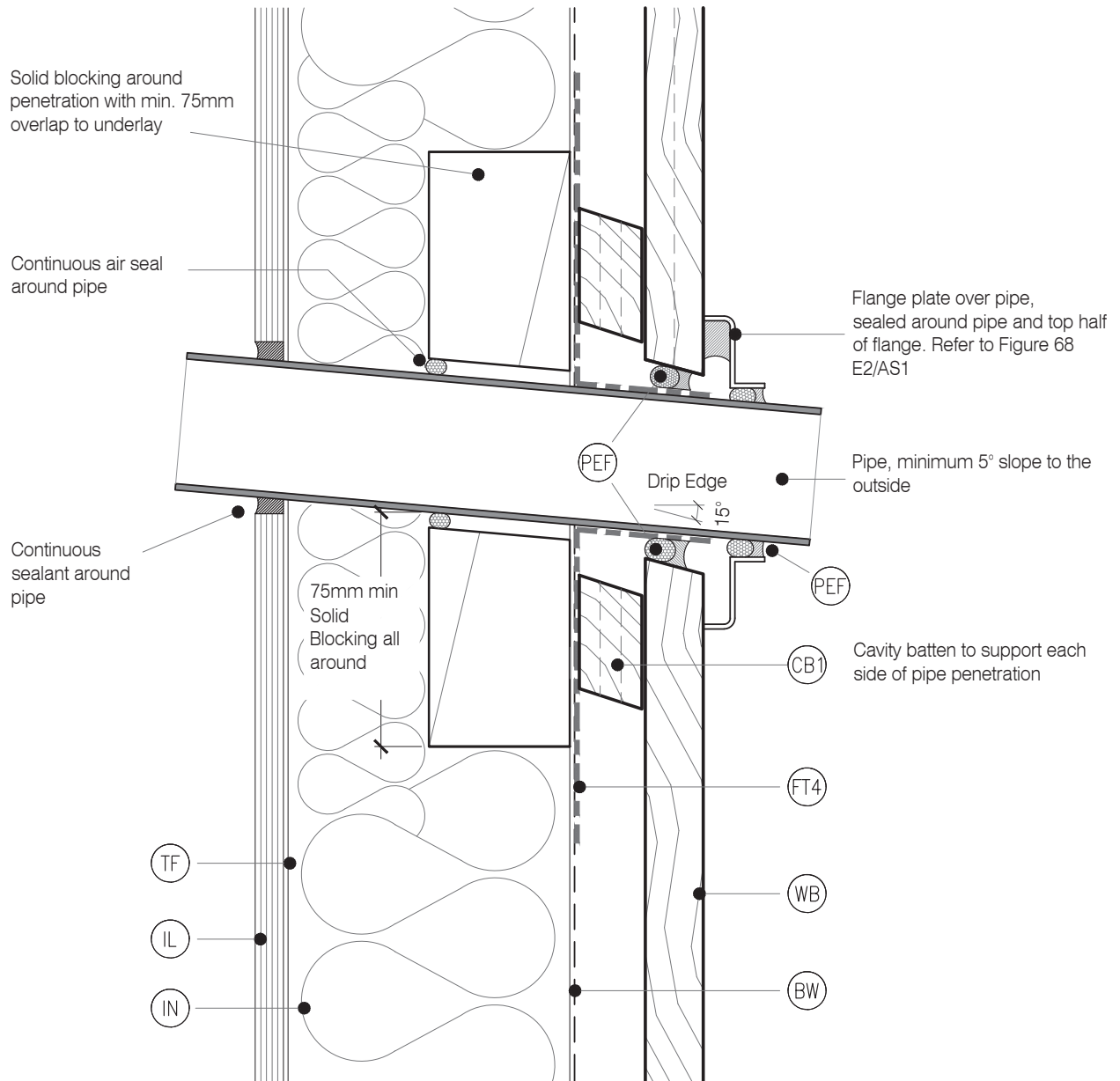


LEGEND :

- BF** BACK FLASHING: Minimum 100mm Polypropylene or PVC rear flashing to provide 50mm cover past the scarf joint on each side
- BW** BUILDING WRAP: Flexible Wall Underlay, as per NZBC E2/AS1 - Table 23. In extra high wind zones, Rigid Underlay required (9.1.7.2 E2/AS1)

- CC** CAVITY CLOSURE: Cavity closure strip, positioned to give a 15mm minimum drip edge to cladding
- FT4** FLEXIBLE FLASHING TAPE: Flexible flashing tape lapped into corner, Refer NZBC E2/AS1 4.3.11 Flashing tape is recommended due to movement that may occur in corners. Not required by E2/AS1
- IL** INTERNAL LINING: Selected Internal Lining

- IN** INSULATION: Selected Insulation
- TF** TIMBER FRAME: H1.2 min treated timber framing
- WB** WEATHERBOARD: Selected JSC Rusticated Weatherboard

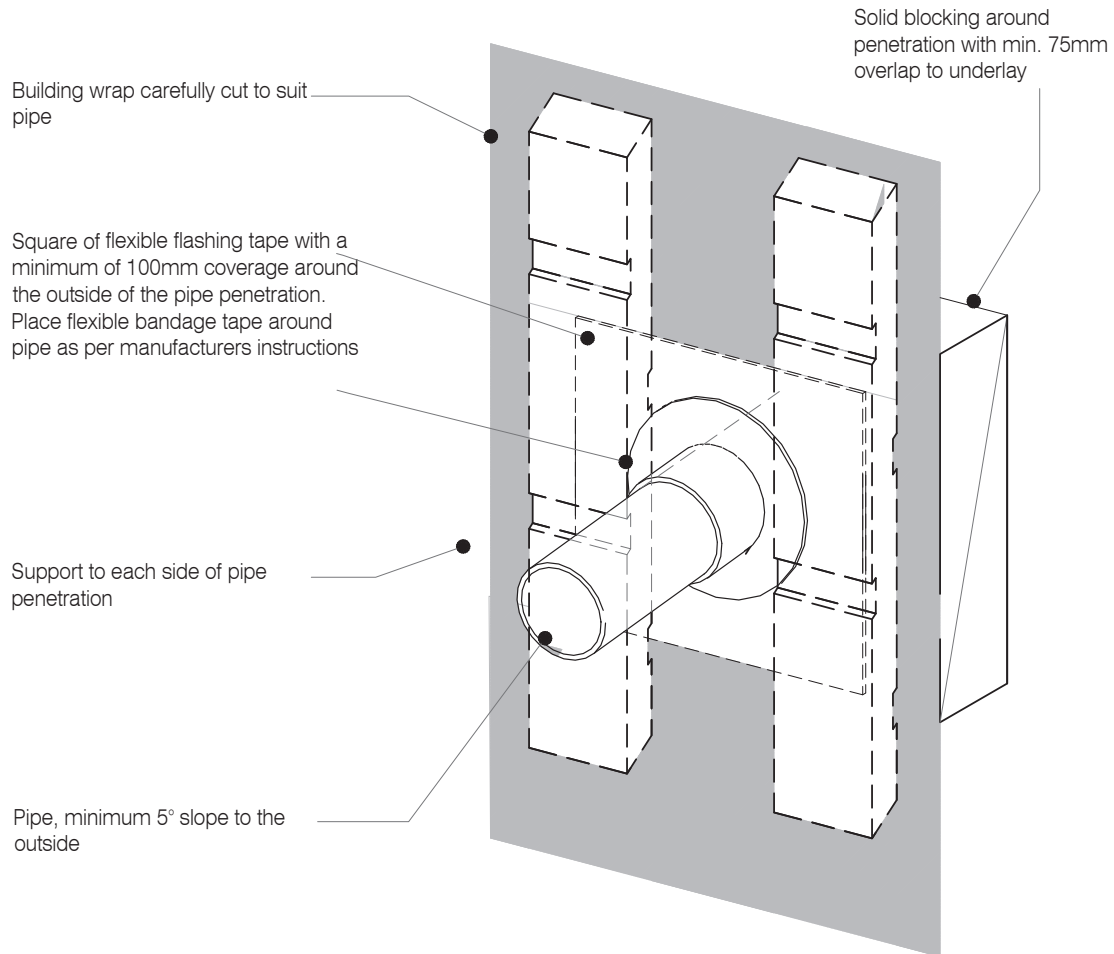


LEGEND :

- BF** BACK FLASHING: Minimum 100mm Polypropylene or PVC rear flashing to provide 50mm cover past the scarf joint on each side
- BW** BUILDING WRAP: Flexible Wall Underlay, as per NZBC E2/AS1 - Table 23. In extra high wind zones, Rigid Underlay required (9.1.7.2 E2/AS1)

- CC** CAVITY CLOSURE: Cavity closure strip, positioned to give a 15mm minimum drip edge to cladding
- FT4** FLEXIBLE FLASHING TAPE: Flexible flashing tape lapped into corner, Refer NZBC E2/AS1 4.3.11 Flashing tape is recommended due to movement that may occur in corners. Not required by E2/AS1
- IL** INTERNAL LINING: Selected Internal Lining

- IN** INSULATION: Selected Insulation
- TF** TIMBER FRAME: H1.2 min treated timber framing
- WB** WEATHERBOARD: Selected JSC Rusticated Weatherboard

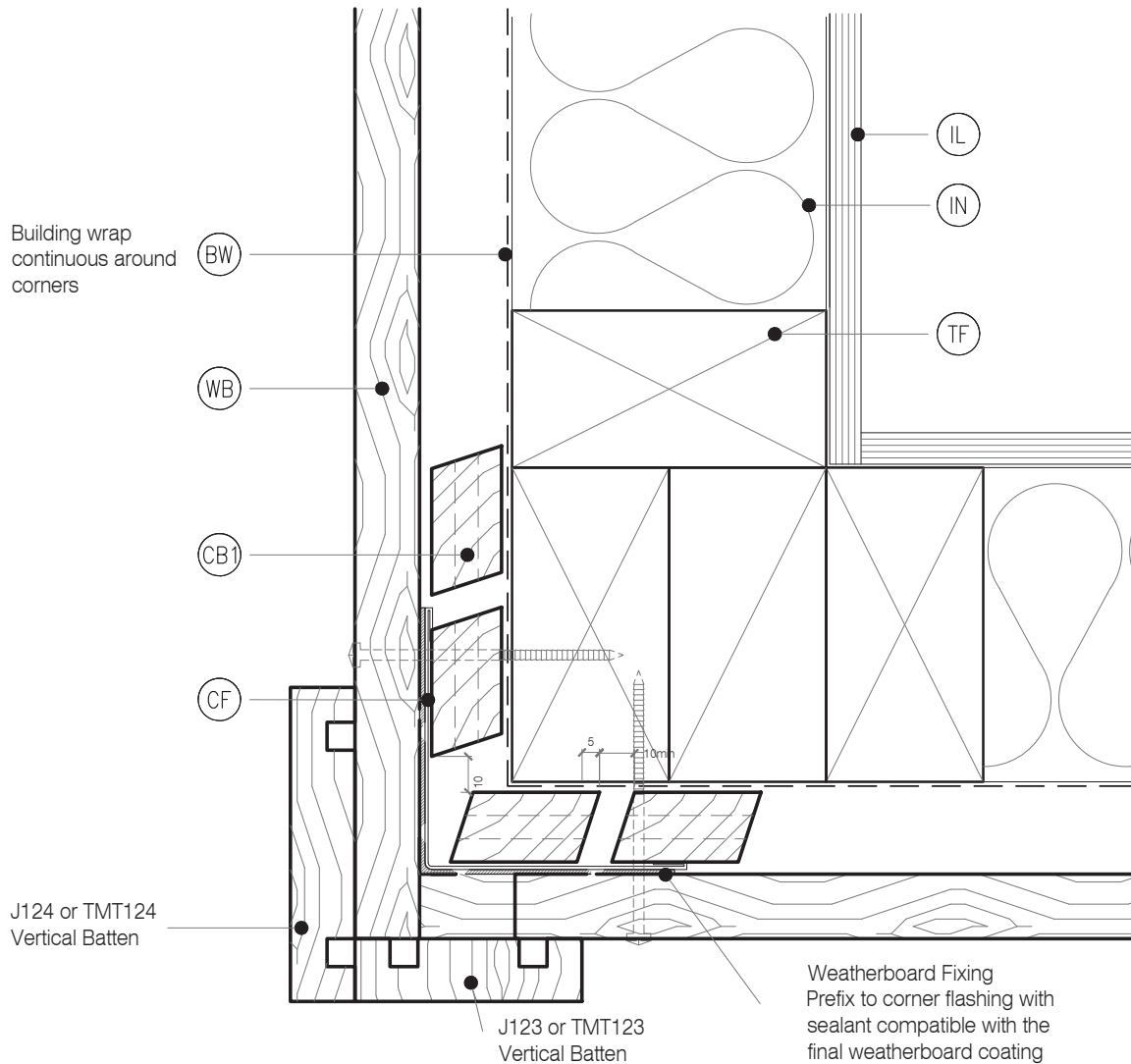


LEGEND :

- (BW) BUILDING WRAP: Flexible Wall Underlay, As per NZBC E2/AS1 - Table 23, In extra high wind zones, Rigid Underlay required (9.1.7.2 E2/AS1)
- (CB1) CAVITY BATTEN - NON STRUCTURAL : Vertically installed JSC-U 45mm x 20mm Radiata Pine H3.2 treated, both face castellated and 18° bevelled edges. Site machined to allow for flashing.
- (FT3) FLEXIBLE FLASHING TAPE: Flexible flashing tape lapped into corner, Refer NZBC E2/AS1 4.3.11 Flashing tape is recommended due to movement that may occur in corners. Not required by E2/AS1

- (CF) CORNER FLASHING: Aluminium, PVC or Stainless Steel corner flashing. Refer NZBC E2/AS1 Section 4.3 "Acceptable flashing materials" Minimum Flashing Size (mm) as per NZBC E2/AS1 Section 4.5.1:
- | FLASHING TYPE | L,M,H & VH Wind Zones | EH Wind Zones |
|---------------|-----------------------|---------------|
| Hemmed | 50X50 | 75X75 |
| Unhemmed | 75x75 | 100x100 |
- (WB) WEATHERBOARD: Selected JSC Rusticated Weatherboard

- (IL) INTERNAL LINING: Selected Internal Lining
- (IN) INSULATION: Selected Insulation
- (TF) TIMBER FRAME: H1.2 min treated timber framing

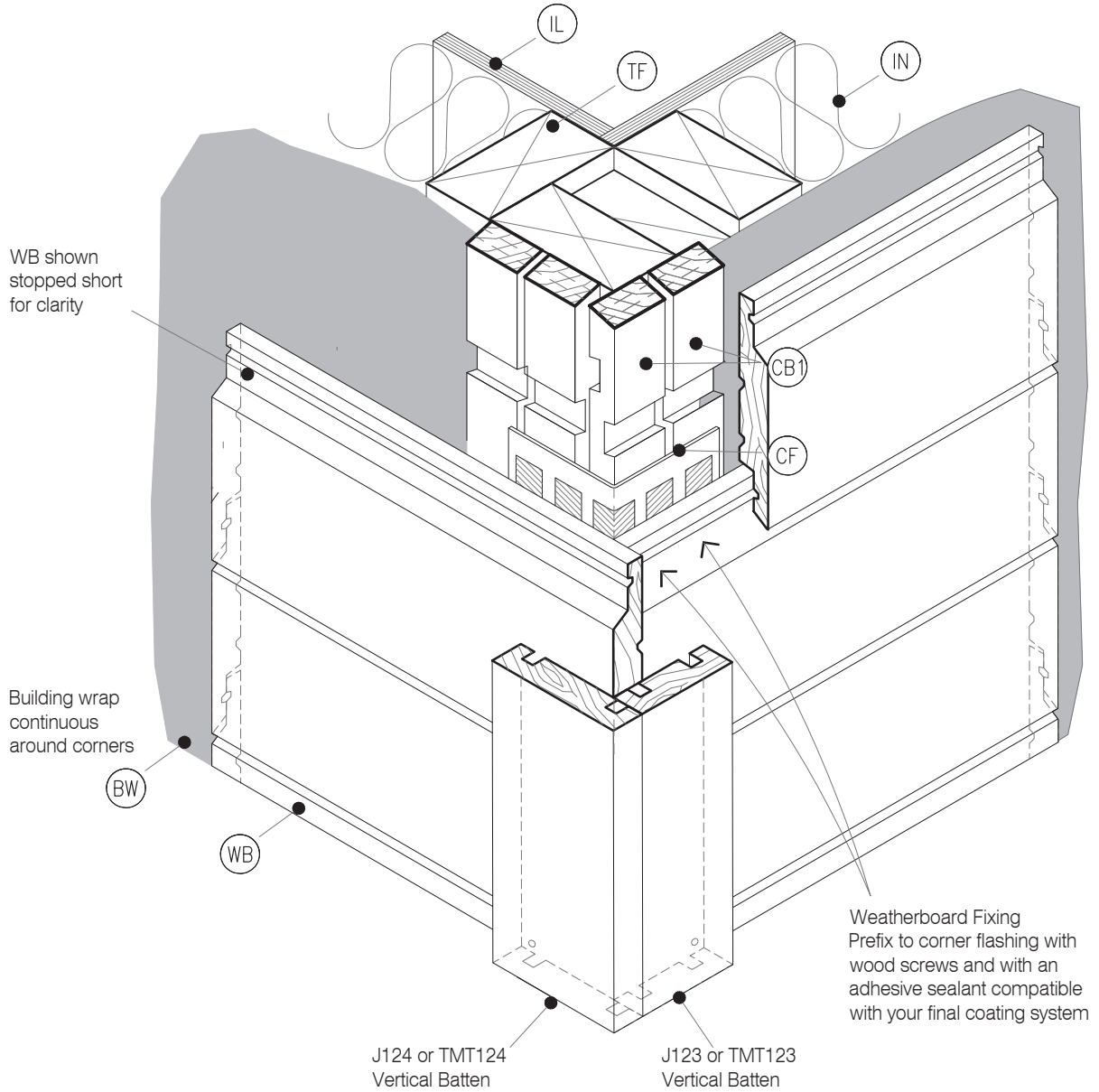


LEGEND :

- (BW) BUILDING WRAP: Flexible Wall Underlay, As per NZBC E2/AS1 - Table 23, In extra high wind zones, Rigid Underlay required (9.1.7.2 E2/AS1)
- (CB1) CAVITY BATTEN - NON STRUCTURAL : Vertically installed JSC-U 45mm x 20mm Radiata Pine H3.2 treated, both face castellated and 18° bevelled edges. Site machined to allow for flashing.
- (FT3) FLEXIBLE FLASHING TAPE: Flexible flashing tape lapped into corner, Refer NZBC E2/AS1 4.3.11 Flashing tape is recommended due to movement that may occur in corners. Not required by E2/AS1

- (CF) CORNER FLASHING: Aluminium, PVC or Stainless Steel corner flashing. Refer NZBC E2/AS1 Section 4.3 'Acceptable flashing materials' Minimum Flashing Size (mm) as per NZBC E2/AS1 Section 4.5.1:
- | FLASHING TYPE | L,M,H & VH Wind Zones | EH Wind Zones |
|---------------|-----------------------|---------------|
| Hemmed | 50X50 | 75X75 |
| Unhemmed | 75X75 | 100X100 |
- (WB) WEATHERBOARD: Selected JSC Rusticated Weatherboard

- (IL) INTERNAL LINING: Selected Internal Lining
- (IN) INSULATION: Selected Insulation
- (TF) TIMBER FRAME: H1.2 min treated timber framing

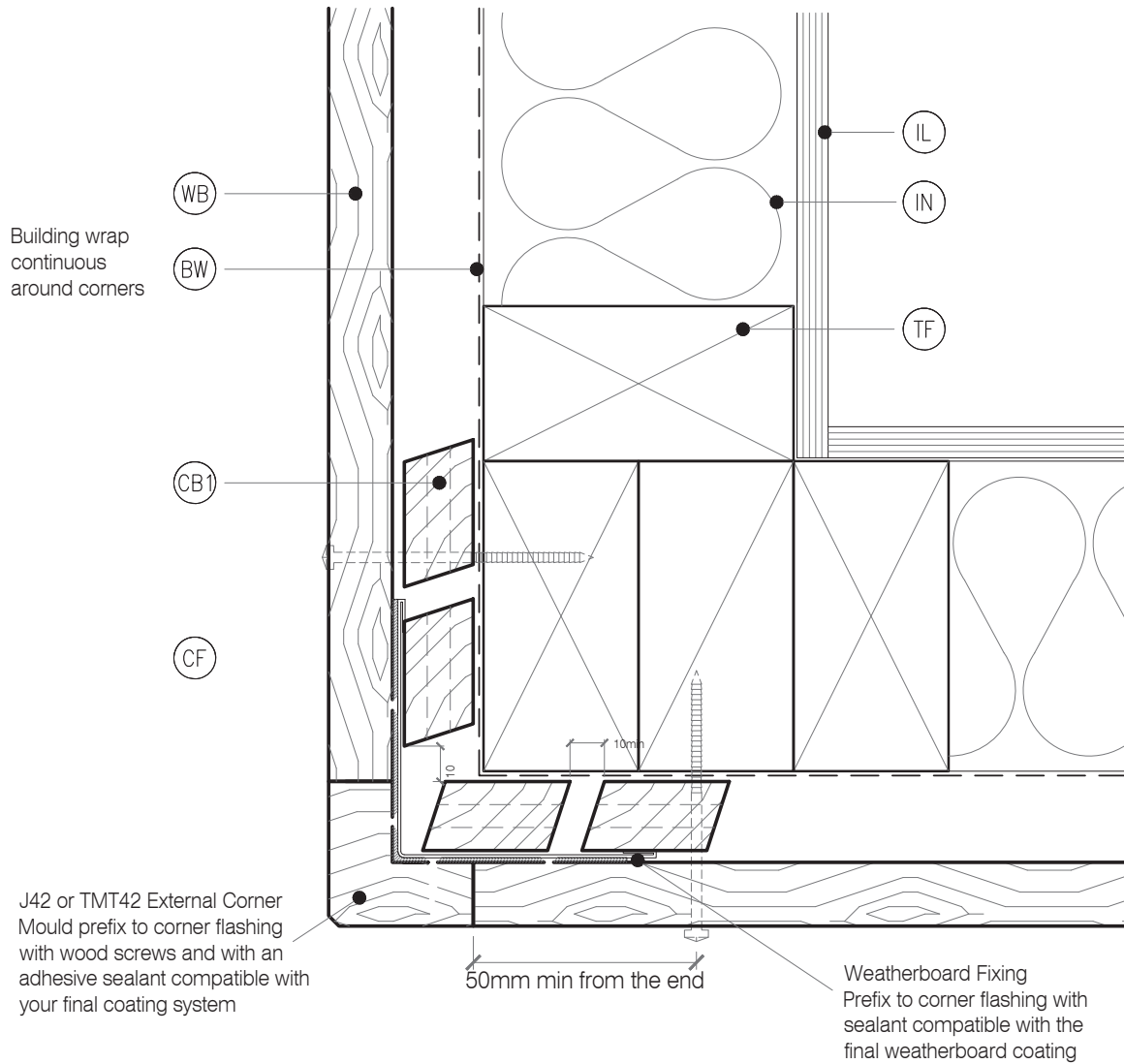


LEGEND :

- (BW) BUILDING WRAP: Flexible Wall Underlay, As per NZBC E2/AS1 - Table 23, In extra high wind zones, Rigid Underlay required (9.1.7.2 E2/AS1)
- (CB1) CAVITY BATTEN - NON STRUCTURAL : Vertically installed JSC-U 45mm x 20mm Radiata Pine H3.2 treated, both face castellated and 18° bevelled edges. Site machined to allow for flashing.
- (FT3) FLEXIBLE FLASHING TAPE: Flexible flashing tape lapped into corner, Refer NZBC E2/AS1 4.3.11 Flashing tape is recommended due to movement that may occur in corners. Not required by E2/AS1

- (CF) CORNER FLASHING: Aluminium, PVC or Stainless Steel corner flashing. Refer NZBC E2/AS1 Section 4.3 "Acceptable flashing materials" Minimum Flashing Size (mm) as per NZBC E2/AS1 Section 4.5.1:
- | FLASHING TYPE | L,M,H & VH Wind Zones | EH Wind Zones |
|---------------|-----------------------|---------------|
| Hemmed | 50X50 | 75X75 |
| Unhemmed | 75x75 | 100x100 |
- (WB) WEATHERBOARD: Selected JSC Rusticated Weatherboard

- (IL) INTERNAL LINING: Selected Internal Lining
- (IN) INSULATION: Selected Insulation
- (TF) TIMBER FRAME: H1.2 min treated timber framing



DETAIL NOTES :

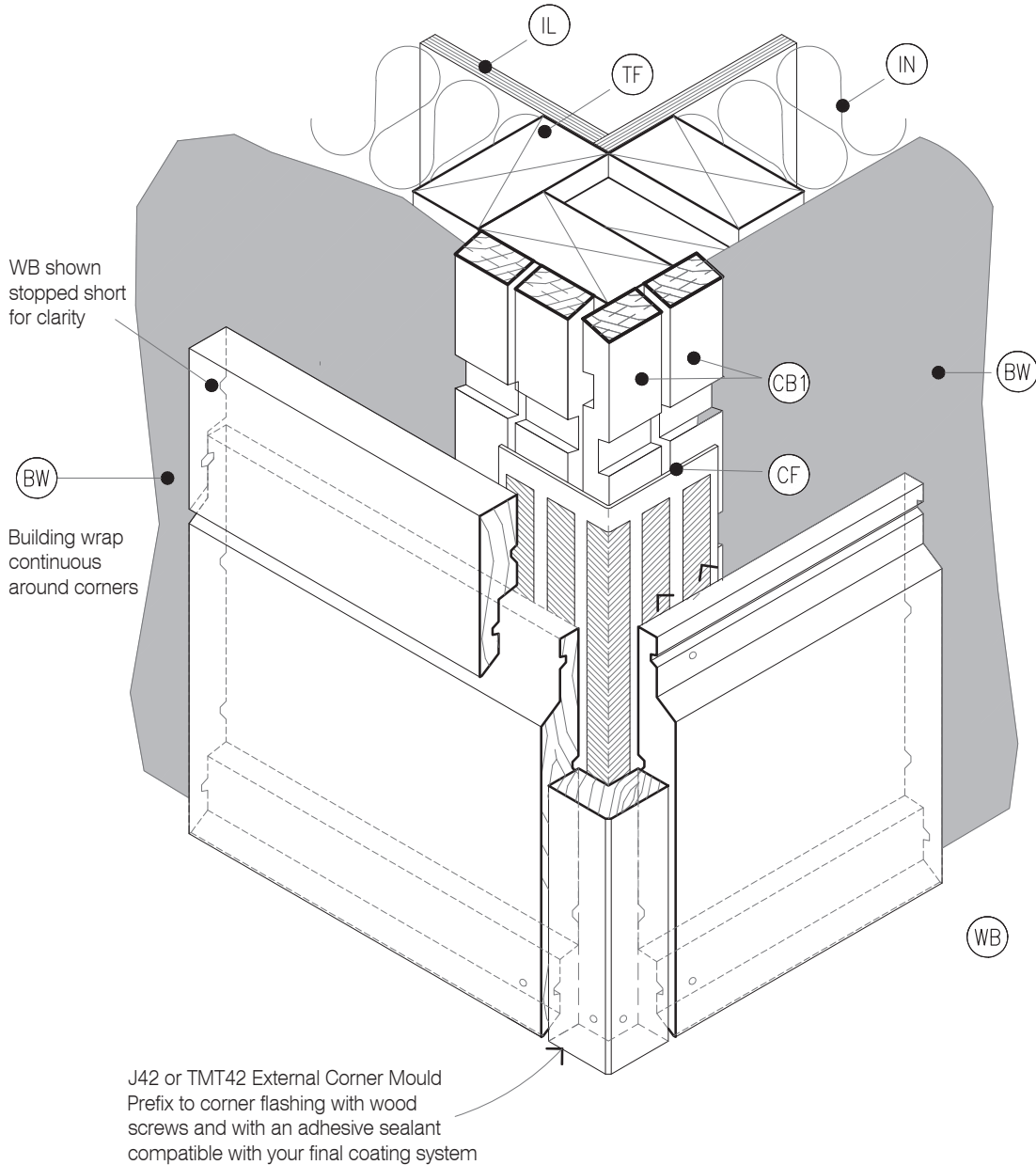
1. For VH and EH wind zones a solid batten (non-castellated) is required down one significant side of the external corner to

LEGEND:

- (BW)** BUILDING WRAP: Flexible Wall Underlay, As per NZBC E2/AS1 - Table 23, In extra high wind zones, Rigid Underlay required (9.1.7.2 E2/AS1)
- (CB1)** CAVITY BATTEN - NON STRUCTURAL : Vertically installed JSC-U 45mm x 20mm Radiata Pine H3.2 treated, both face castellated and 18° bevelled edges. Site machined to allow for flashing.
- (FT3)** FLEXIBLE FLASHING TAPE: Flexible flashing tape lapped into corner, Refer NZBC E2/AS1 4.3.11 Flashing tape is recommended due to movement that may occur in corners. Not required by E2/AS1

- (CF)** CORNER FLASHING: Aluminium, PVC or Stainless Steel corner flashing, Refer NZBC E2/AS1 Section 4.3 "Acceptable flashing materials" Minimum Flashing Size (mm) as per NZBC E2/AS1 Section 4.5.1:
- | FLASHING TYPE | L,M,H & VH Wind Zones | EH Wind Zones |
|---------------|-----------------------|---------------|
| Hemmed | 50X50 | 75X75 |
| Unhemmed | 75x75 | 100x100 |
- (WB)** WEATHERBOARD: Selected JSC Rusticated Weatherboard

- (IL)** INTERNAL LINING: Selected Internal Lining
- (IN)** INSULATION: Selected Insulation
- (TF)** TIMBER FRAME: H1.2 min treated timber framing

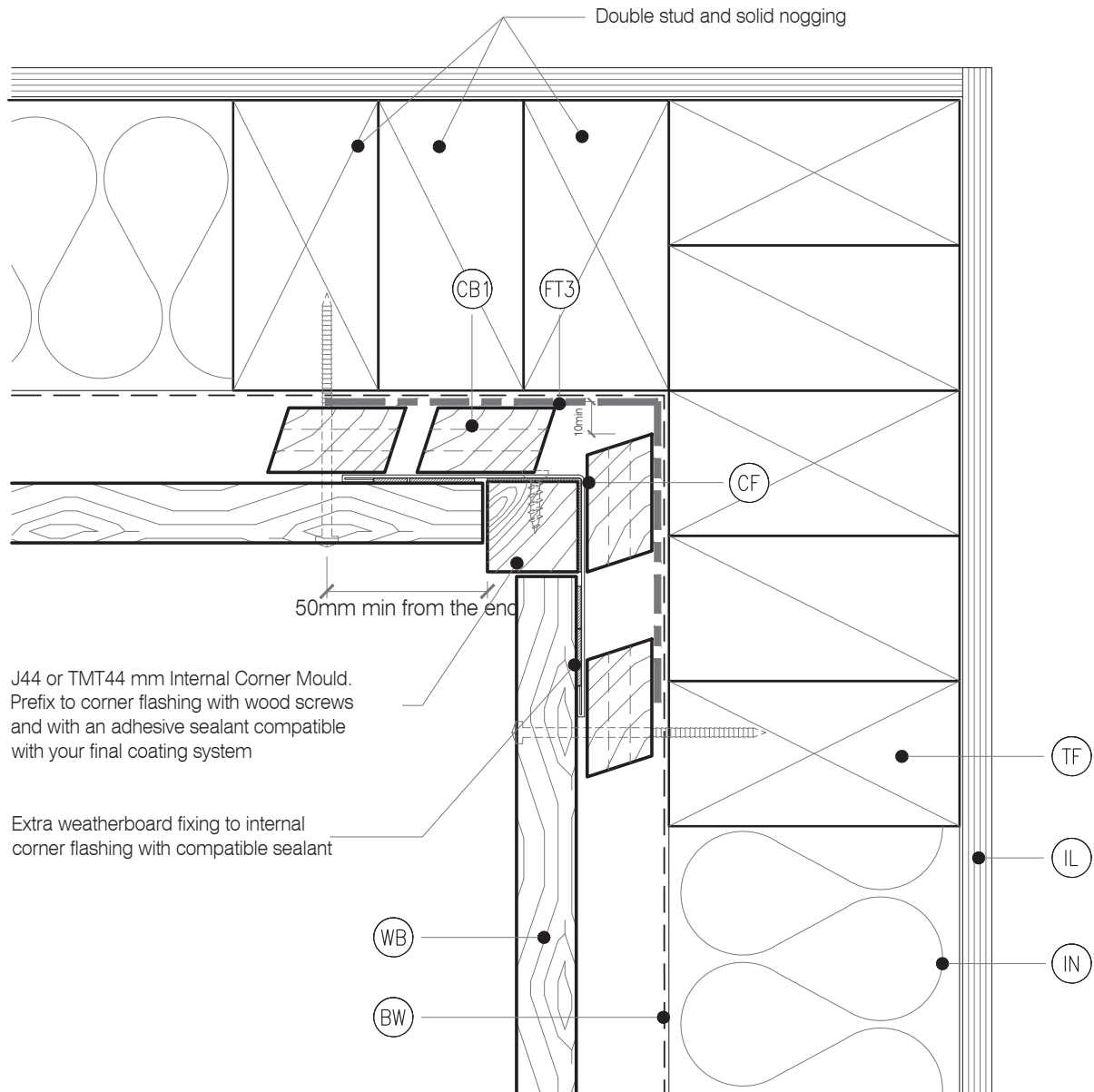


LEGEND :

- (BW) BUILDING WRAP: Flexible Wall Underlay, As per NZBC E2/AS1 - Table 23, In extra high wind zones, Rigid Underlay required (9.1.7.2 E2/AS1)
- (CB1) CAVITY BATTEN - NON STRUCTURAL : Horizontally installed JSC-U 45mm x 20mm Radiata Pine H3.2 treated, both face castellated and 18° bevelled edges.
- (CC) CAVITY CLOSURE: Cavity closure strip, positioned to give a 15mm Min drip edge to cladding
- (CF) CAP FLASHING: Continuous parapet flashing. Materials as per E2/AS1 4.3 + Figure 9 & Table 7

- (FT) FLASHING TAPE: As per E2/AS1 4.3.11
- (IL) INTERNAL LINING: Selected Internal Lining
- (IN) INSULATION: Selected Insulation
- (PSF) PARAPET SADDLE FLASHING: Materials as per E2/AS1 4.0, refer E2/AS1 Figure 11 & 12. Typically 0.45mm Min 316 Stainless Steel. Refer Table 20 & Table 21 for Comparability of Materials in Contact

- (PB) PLYWOOD BACKING: 17mm CCA treated H3.2 grade plywood substrate
- (RM) ROOFING MEMBRANE: Selected System on 17mm CCA treated H3.2 grade plywood glued and screwed to Rafters. Roof Membrane requires 400mm solid block support each way & solid support to all sheet edges
- (TF) TIMBER FRAME: H1.2 min treated timber framing
- (WB) WEATHERBOARD: Selected JSC Rusticated Weatherboard



DETAIL NOTES :

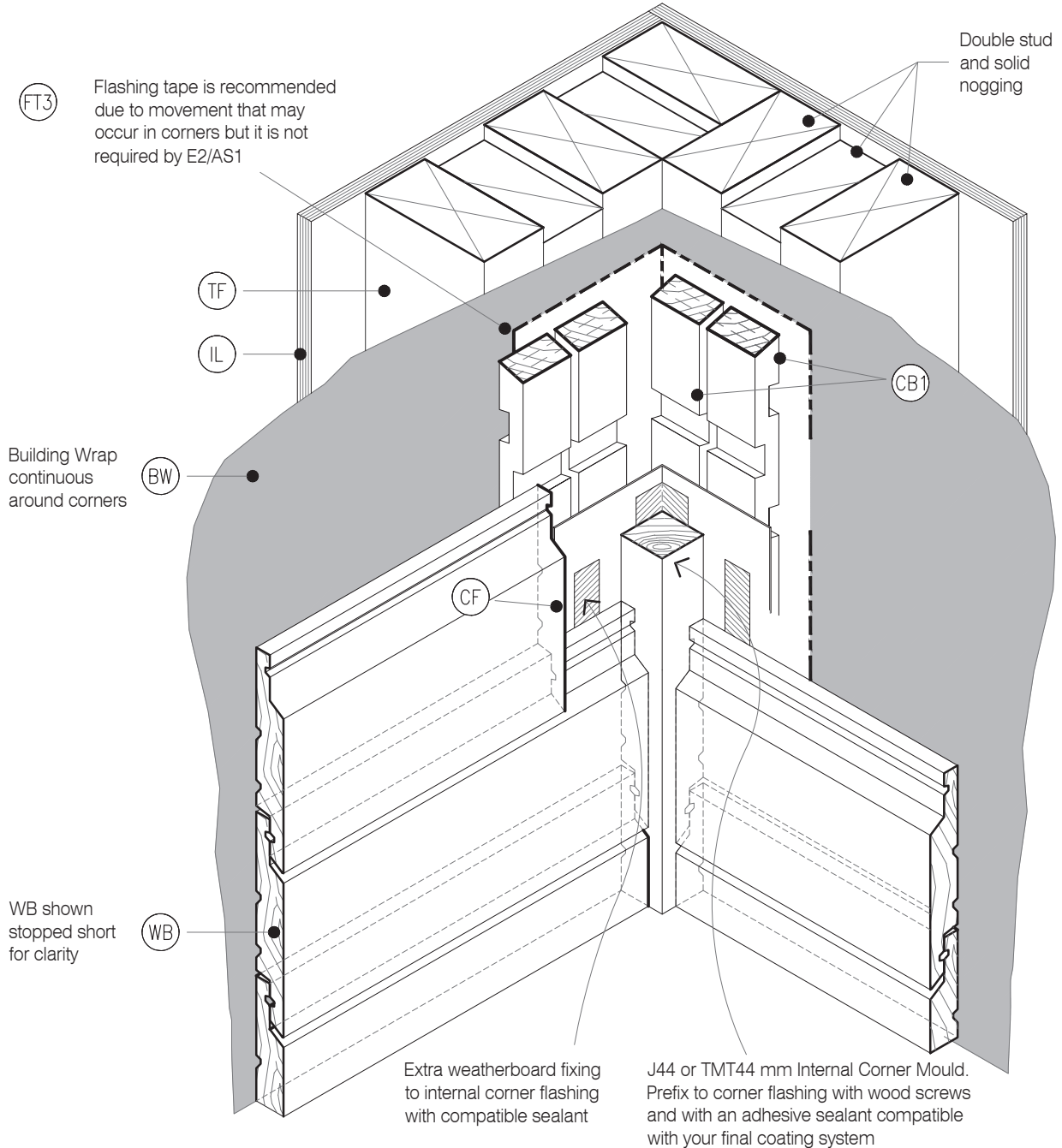
1. Flashing tape is recommended due to movement that may occur in corners but it is not required by E2/AS1
2. Aluminium extrusion must not be continuous over solid floor joists.

LEGEND :

- (BW) BUILDING WRAP: Flexible Wall Underlay, As per NZBC E2/AS1 - Table 23, In extra high wind zones, Rigid Underlay required (9.1.7.2 E2/AS1)
- (CB1) CAVITY BATTEN - NON STRUCTURAL : Horizontally installed JSC-U 45mm x 20mm Radiata Pine H3.2 treated, both face castellated and 18° bevelled edges.
- (CC) CAVITY CLOSURE: Cavity closure strip, positioned to give a 15mm Min drip edge to cladding
- (CF) CAP FLASHING: Continuous parapet flashing. Materials as per E2/AS1 4.3 + Figure 9 & Table 7

- (FT) FLASHING TAPE: As per E2/AS1 4.3.11
- (IL) INTERNAL LINING: Selected Internal Lining
- (IN) INSULATION: Selected Insulation
- (PSF) PARAPET SADDLE FLASHING: Materials as per E2/AS1 4.0, refer E2/AS1 Figure 11 & 12. Typically 0.45mm Min 316 Stainless Steel. Refer Table 20 & Table 21 for Comparability of Materials in Contact

- (PB) PLYWOOD BACKING: 17mm CCA treated H3.2 grade plywood substrate
- (RM) ROOFING MEMBRANE: Selected System on 17mm CCA treated H3.2 grade plywood glued and screwed to Rafters. Roof Membrane requires 400mm solid block support each way & solid support to all sheet edges
- (TF) TIMBER FRAME: H1.2 min treated timber framing
- (WB) WEATHERBOARD: Selected JSC Rusticated Weatherboard



TYPE
RUSTICATED WB - 20MM CAVITY FIX

NAME
3D - Internal Corner

- TO BE READ IN CONJUNCTION WITH COMPLETE JSC RUSTICLAD SYSTEM LITERATURE
- DETAILS MAY BE SUBJECT CHANGE WITHOUT NOTICE

CodeMark
CMNZ30081

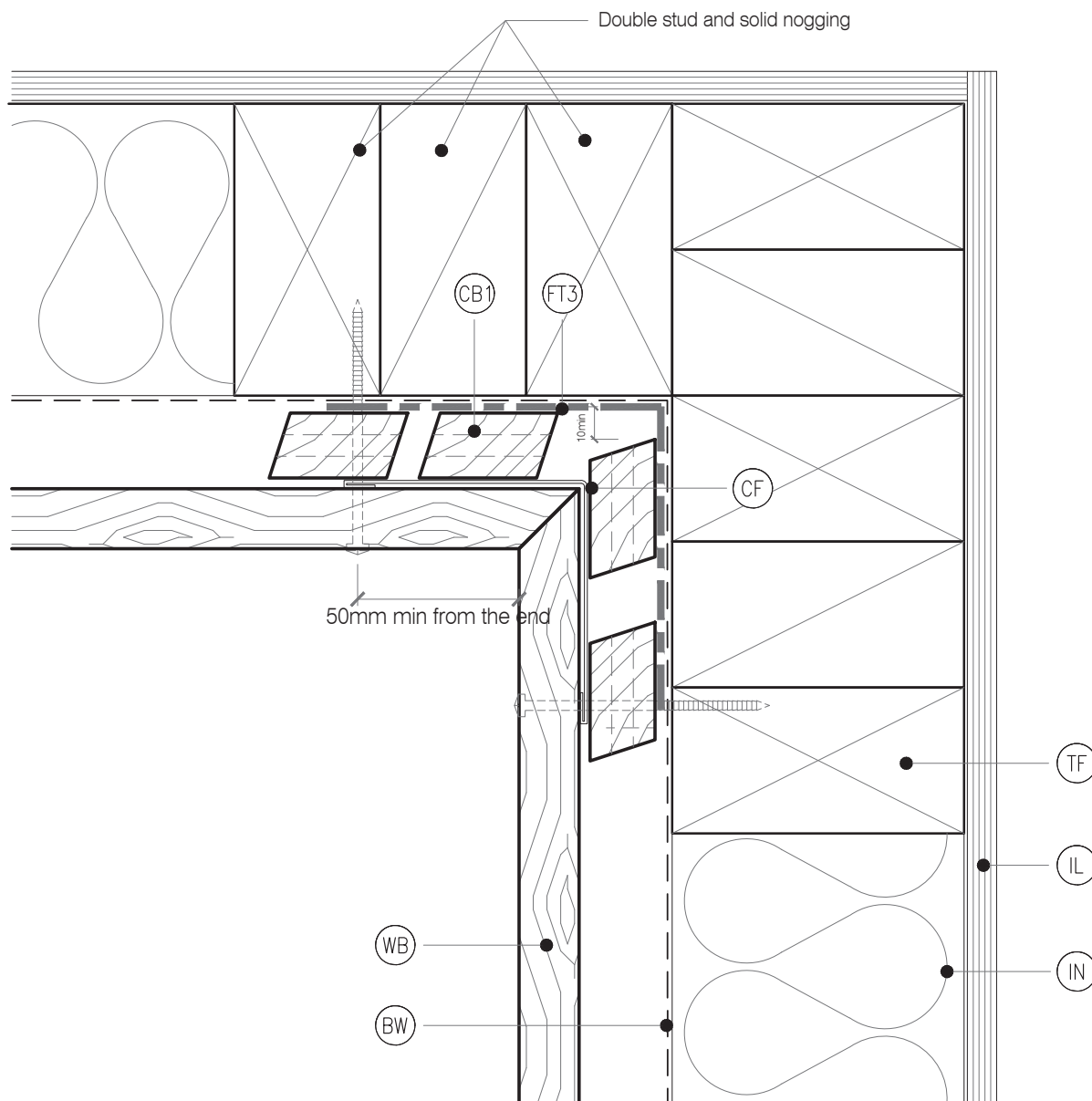
DRAWING SCALE 1:2 @ A4	ISSUE DATE 24/02/2025
DRAWING NUMBER JSC 20CF RC61	VERSION 2.5

LEGEND :

- (BW) BUILDING WRAP: Flexible Wall Underlay, As per NZBC E2/AS1 - Table 23, In extra high wind zones, Rigid Underlay required (9.1.7.2 E2/AS1)
- (CB1) CAVITY BATTEN - NON STRUCTURAL : Horizontally installed JSC-U 45mm x 20mm Radiata Pine H3.2 treated, both face castellated and 18° bevelled edges.
- (CC) CAVITY CLOSURE: Cavity closure strip, positioned to give a 15mm Min drip edge to cladding
- (CF) CAP FLASHING: Continuous parapet flashing. Materials as per E2/AS1 4.3 + Figure 9 & Table 7

- (FT) FLASHING TAPE: As per E2/AS1 4.3.11
- (IL) INTERNAL LINING: Selected Internal Lining
- (IN) INSULATION: Selected Insulation
- (PSF) PARAPET SADDLE FLASHING: Materials as per E2/AS1 4.0, refer E2/AS1 Figure 11 & 12. Typically 0.45mm Min 316 Stainless Steel. Refer Table 20 & Table 21 for Comparability of Materials in Contact

- (PB) PLYWOOD BACKING: 17mm CCA treated H3.2 grade plywood substrate
- (RM) ROOFING MEMBRANE: Selected System on 17mm CCA treated H3.2 grade plywood glued and screwed to Rafters. Roof Membrane requires 400mm solid block support each way & solid support to all sheet edges
- (TF) TIMBER FRAME: H1.2 min treated timber framing
- (WB) WEATHERBOARD: Selected JSC Rusticated Weatherboard



DETAIL NOTES :

1. Flashing tape is recommended due to movement that may occur in corners but it is not required by E2/AS1

2. Aluminium extrusion must not be continuous over solid floor joists.

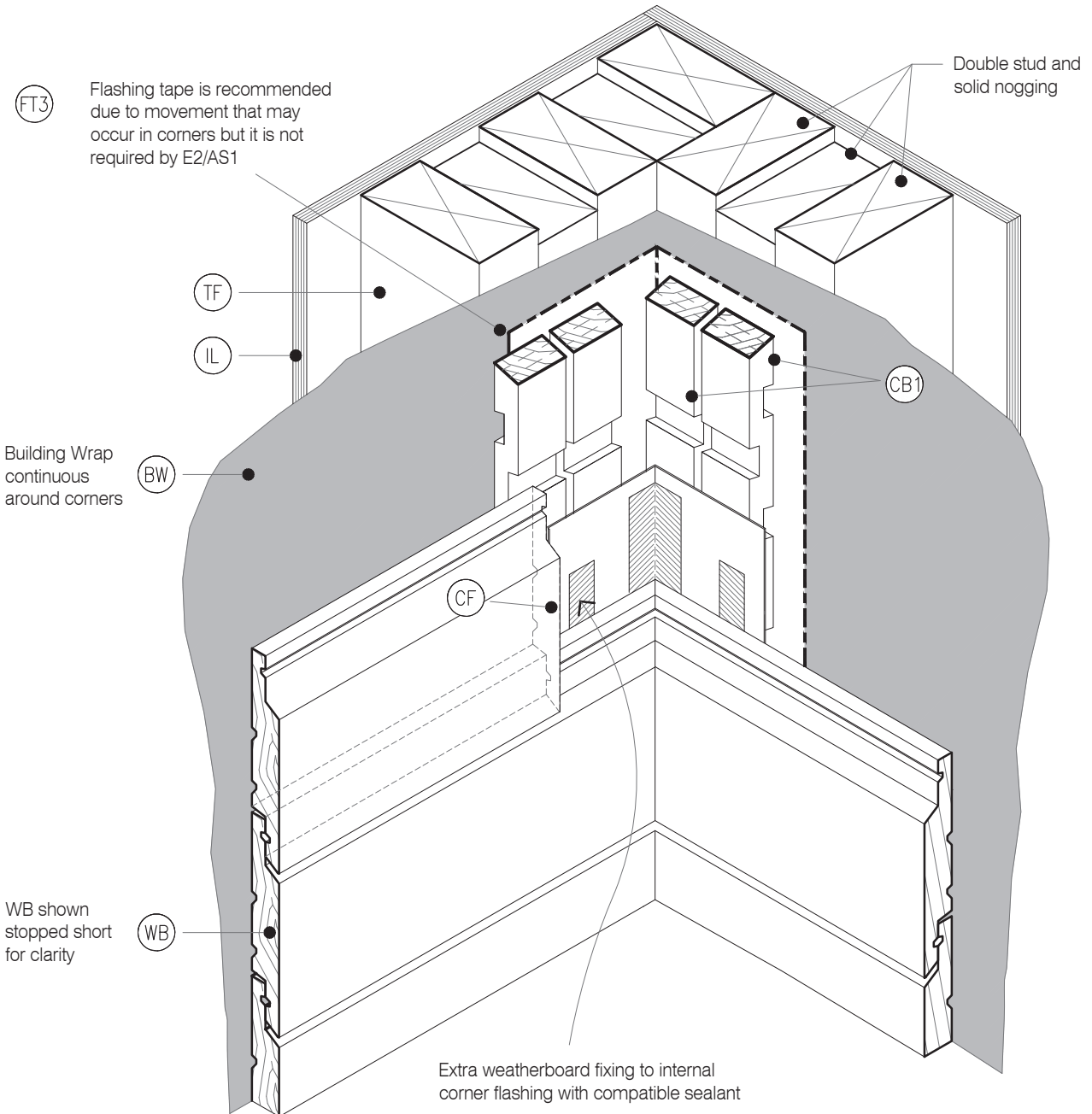


LEGEND :

- (BW)** BUILDING WRAP: Flexible Wall Underlay, As per NZBC E2/AS1 - Table 23, In extra high wind zones, Rigid Underlay required (9.1.7.2 E2/AS1)
- (CB1)** CAVITY BATTEN - NON STRUCTURAL : Horizontally installed JSC-U 45mm x 20mm Radiata Pine H3.2 treated, both face castellated and 18° bevelled edges.
- (CC)** CAVITY CLOSURE: Cavity closure strip, positioned to give a 15mm Min drip edge to cladding
- (CF)** CAP FLASHING: Continuous parapet flashing. Materials as per E2/AS1 4.3 + Figure 9 & Table 7

- (FT)** FLASHING TAPE: As per E2/AS1 4.3.11
- (IL)** INTERNAL LINING: Selected Internal Lining
- (IN)** INSULATION: Selected Insulation
- (PSF)** PARAPET SADDLE FLASHING: Materials as per E2/AS1 4.0, refer E2/AS1 Figure 11 & 12 . Typically 0.45mm Min 316 Stainless Steel. Refer Table 20 & Table 21 for Comparability of Materials in Contact

- (PB)** PLYWOOD BACKING: 17mm CCA treated H3.2 grade plywood substrate
- (RM)** ROOFING MEMBRANE: Selected System on 17mm CCA treated H3.2 grade plywood glued and screwed to Rafters. Roof Membrane requires 400mm solid block support each way & solid support to all sheet edges
- (TF)** TIMBER FRAME: H1.2 min treated timber framing
- (WB)** WEATHERBOARD: Selected JSC Rusticated Weatherboard



TYPE
RUSTICATED WB - 20MM CAVITY FIX

NAME
3D - Internal Corner

- TO BE READ IN CONJUNCTION WITH COMPLETE JSC RUSTICLAD SYSTEM LITERATURE
- DETAILS MAY BE SUBJECT CHANGE WITHOUT NOTICE

CodeMark
CMN230081

DRAWING SCALE
1:2 @ A4

ISSUE DATE
24/02/2025

DRAWING NUMBER
JSC 20CF RC63

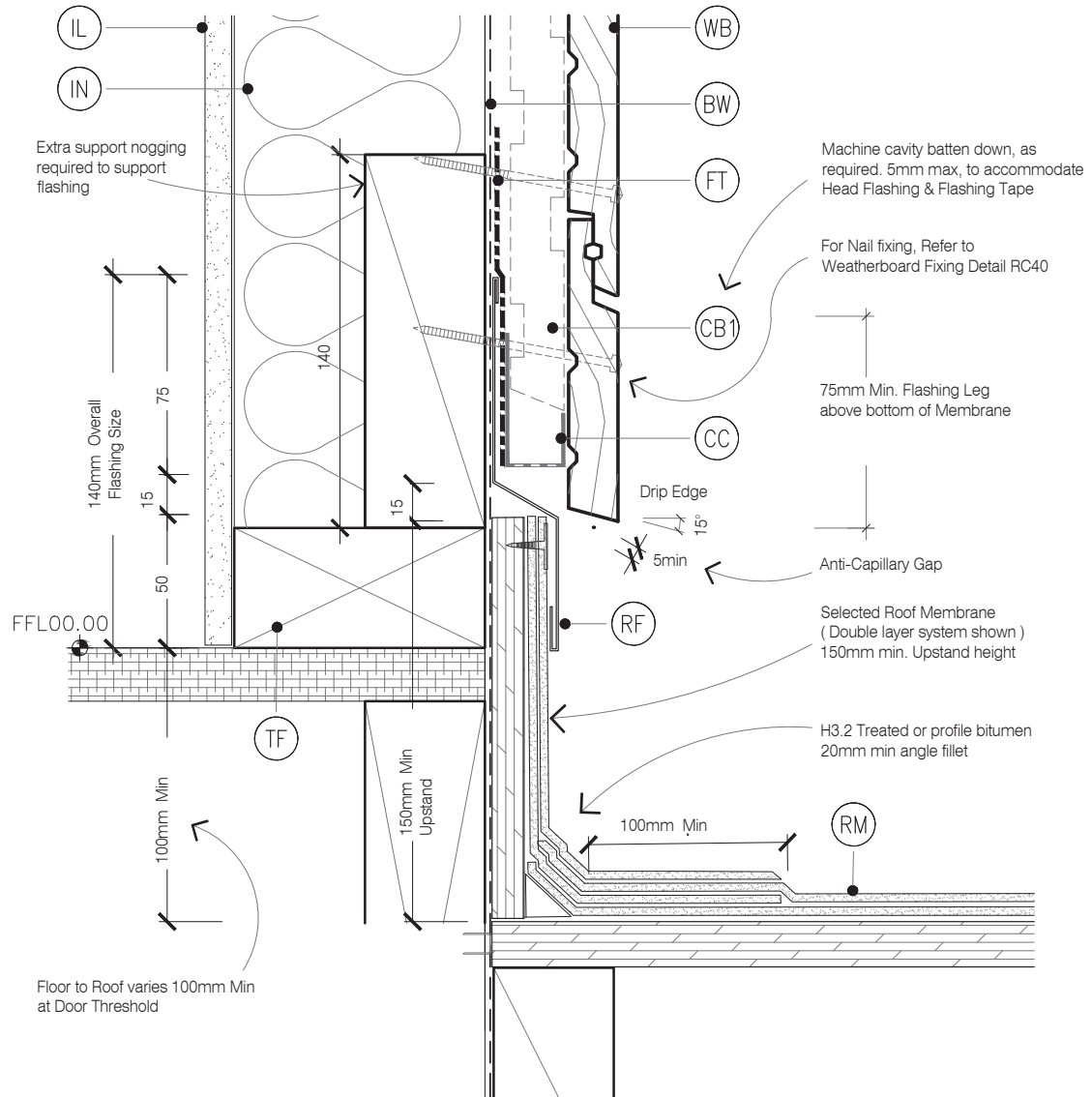
VERSION
2.5

LEGEND:

- (BW) BUILDING WRAP: Flexible Wall Underlay, As per NZBC E2/AS1 - Table 23, In extra high wind zones, Rigid Underlay required (9.1.7.2 E2/AS1)
- (CB1) CAVITY BATTEN - NON STRUCTURAL : Horizontally installed JSC-U 45mm x 20mm Radiata Pine H3.2 treated, both face castellated and 18° bevelled edges.
- (CC) CAVITY CLOSURE: Cavity closure strip, positioned to give a 15mm Min drip edge to cladding
- (CF) CAP FLASHING: Continuous parapet flashing. Materials as per E2/AS1 4.3 + Figure 9 & Table 7

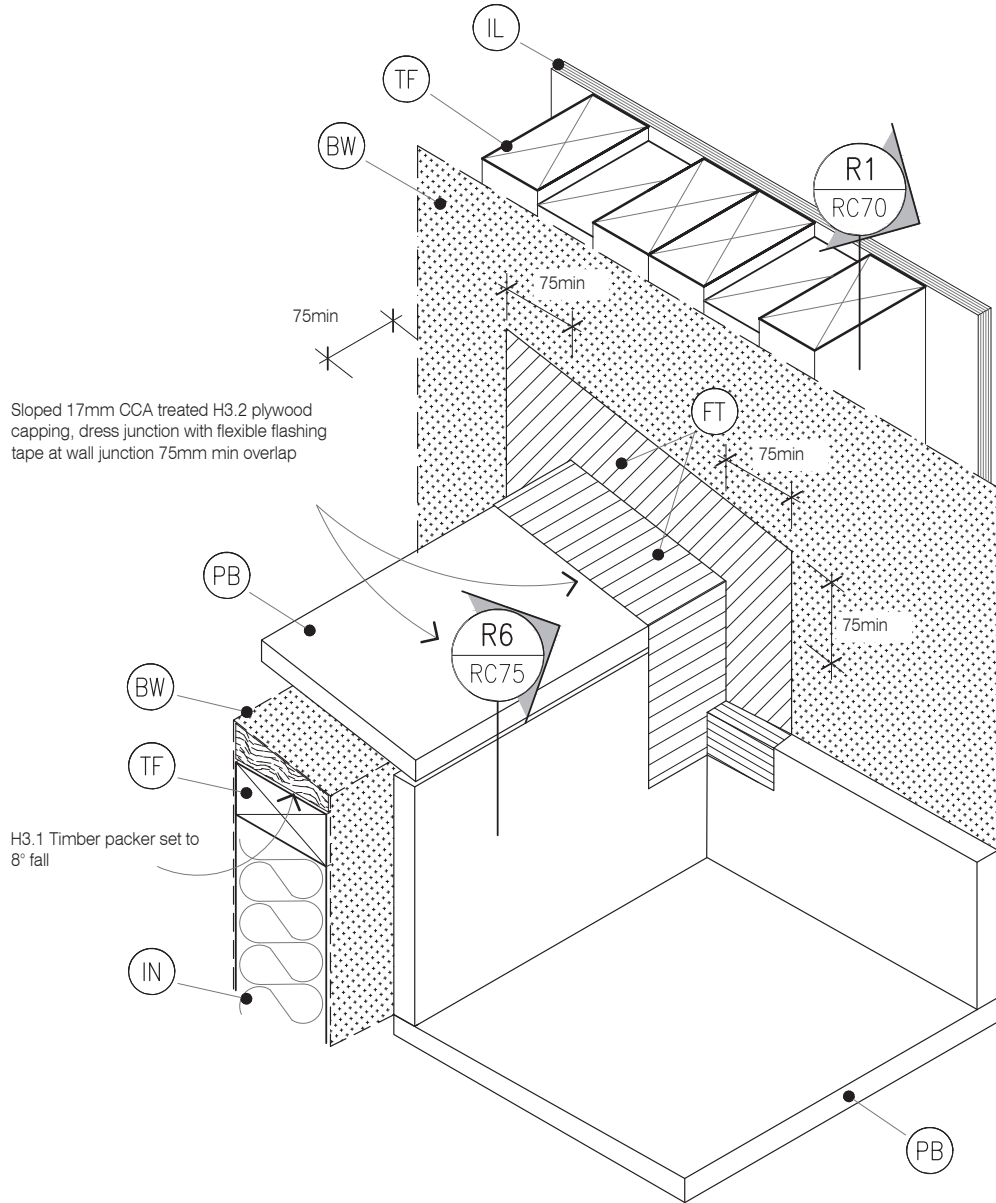
- (FT) FLASHING TAPE: As per E2/AS1 4.3.11
- (IL) INTERNAL LINING: Selected Internal Lining
- (IN) INSULATION: Selected Insulation
- (PSF) PARAPET SADDLE FLASHING: Materials as per E2/AS1 4.0, refer E2/AS1 Figure 11 & 12 . Typically 0.45mm Min 316 Stainless Steel. Refer Table 20 & Table 21 for Comparability of Materials in Contact

- (PB) PLYWOOD BACKING: 17mm CCA treated H3.2 grade plywood substrate
- (RM) ROOFING MEMBRANE: Selected System on 17mm CCA treated H3.2 grade plywood glued and screwed to Rafter. Roof Membrane requires 400mm solid block support each way & solid support to all sheet edges
- (TF) TIMBER FRAME: H1.2 min treated timber framing
- (WB) WEATHERBOARD: Selected JSC Rusticated Weatherboard



LEGEND:

(BW)	BUILDING WRAP: Flexible Wall Underlay, As per NZBC E2/AS1 - Table 23, In extra high wind zones, Rigid Underlay required (9.1.7.2 E2/AS1)	(FT)	FLASHING TAPE: As per E2/AS1 4.3.11	(PB)	PLYWOOD BACKING: 17mm CCA treated H3.2 grade plywood substrate
(CB1)	CAVITY BATTEN - NON STRUCTURAL : Horizontally installed JSC-U 45mm x 20mm Radiata Pine H3.2 treated, both face castellated and 18° bevelled edges.	(IL)	INTERNAL LINING: Selected Internal Lining	(RM)	ROOFING MEMBRANE: Selected System on 17mm CCA treated H3.2 grade plywood glued and screwed to Rafter. Roof Membrane requires 400mm solid block support each way & solid support to all sheet edges
(CC)	CAVITY CLOSURE: Cavity closure strip, positioned to give a 15mm Min drip edge to cladding	(IN)	INSULATION: Selected Insulation	(TF)	TIMBER FRAME: H1.2 min treated timber framing
(CF)	CAP FLASHING: Continuous parapet flashing. Materials as per E2/AS1 4.3 + Figure 9 & Table 7	(PSF)	PARAPET SADDLE FLASHING: Materials as per E2/AS1 4.0, refer E2/AS1 Figure 11 & 12 . Typically 0.45mm Min 316 Stainless Steel. Refer Table 20 & Table 21 for Comparability of Materials in Contact	(WB)	WEATHERBOARD: Selected JSC Rusticated Weatherboard



STAGE ONE

TYPE
RUSTICATED WB - 20MM CAVITY FIX

NAME
Parapet Saddle Flashing - Stage ONE

• TO BE READ IN CONJUNCTION WITH COMPLETE JSC RUSTICLAD SYSTEM LITERATURE
• DETAILS MAY BE SUBJECT CHANGE WITHOUT NOTICE

CodeMark
CMN230081

DRAWING SCALE
1:2.5 @ A4

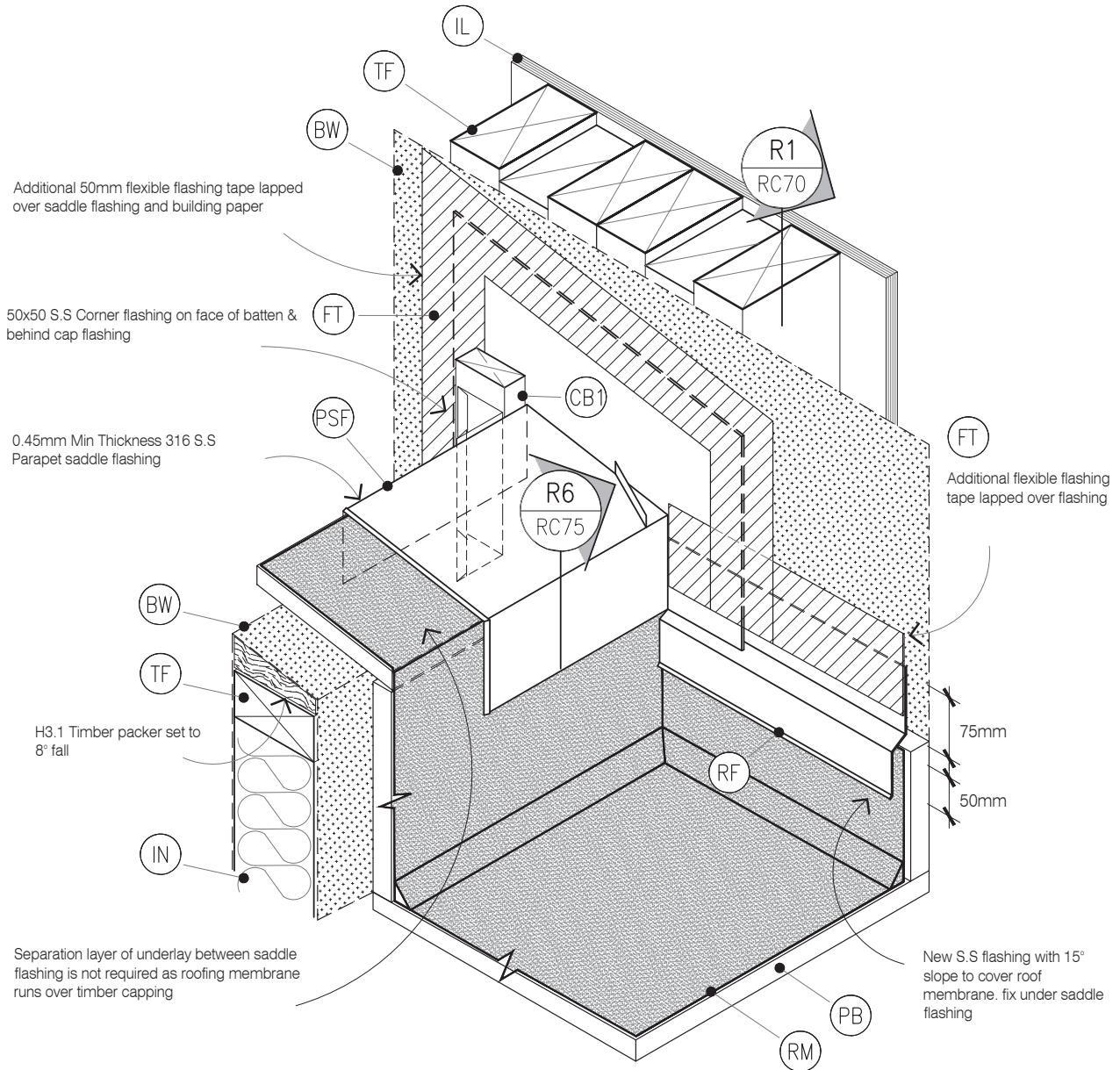
ISSUE DATE
24/02/2025

DRAWING NUMBER
JSC 20CF RC71

VERSION
2.5

LEGEND:

(BW) BUILDING WRAP: Flexible Wall Underlay, As per NZBC E2/AS1 - Table 23, In extra high wind zones, Rigid Underlay required (9.1.7.2 E2/AS1)	(FT) FLASHING TAPE: As per E2/AS1 4.3.11	(PB) PLYWOOD BACKING: 17mm CCA treated H3.2 grade plywood substrate
(CB1) CAVITY BATTEN - NON STRUCTURAL : Horizontally installed JSC-U 45mm x 20mm Radiata Pine H3.2 treated, both face castellated and 18° bevelled edges.	(IL) INTERNAL LINING: Selected Internal Lining	(RM) ROOFING MEMBRANE: Selected System on 17mm CCA treated H3.2 grade plywood glued and screwed to Rafter. Roof Membrane requires 400mm solid block support each way & solid support to all sheet edges
(CC) CAVITY CLOSURE: Cavity closure strip, positioned to give a 15mm Min drip edge to cladding	(IN) INSULATION: Selected Insulation	(TF) TIMBER FRAME: H1.2 min treated timber framing
(CF) CAP FLASHING: Continuous parapet flashing. Materials as per E2/AS1 4.3 + Figure 9 & Table 7	(PSF) PARAPET SADDLE FLASHING: Materials as per E2/AS1 4.0, refer E2/AS1 Figure 11 & 12 . Typically 0.45mm Min 316 Stainless Steel. Refer Table 20 & Table 21 for Comparability of Materials in Contact	(WB) WEATHERBOARD: Selected JSC Rusticated Weatherboard



STAGE TWO

TYPE
RUSTICATED WB - 20MM CAVITY FIX

NAME
Parapet Saddle Flashing - Stage TWO

• TO BE READ IN CONJUNCTION WITH COMPLETE JSC RUSTICLAD SYSTEM LITERATURE
• DETAILS MAY BE SUBJECT CHANGE WITHOUT NOTICE

CodeMark
CMNZ30081

DRAWING SCALE
1:2.5 @ A4

ISSUE DATE
24/02/2025

DRAWING NUMBER
JSC 20CF RC72

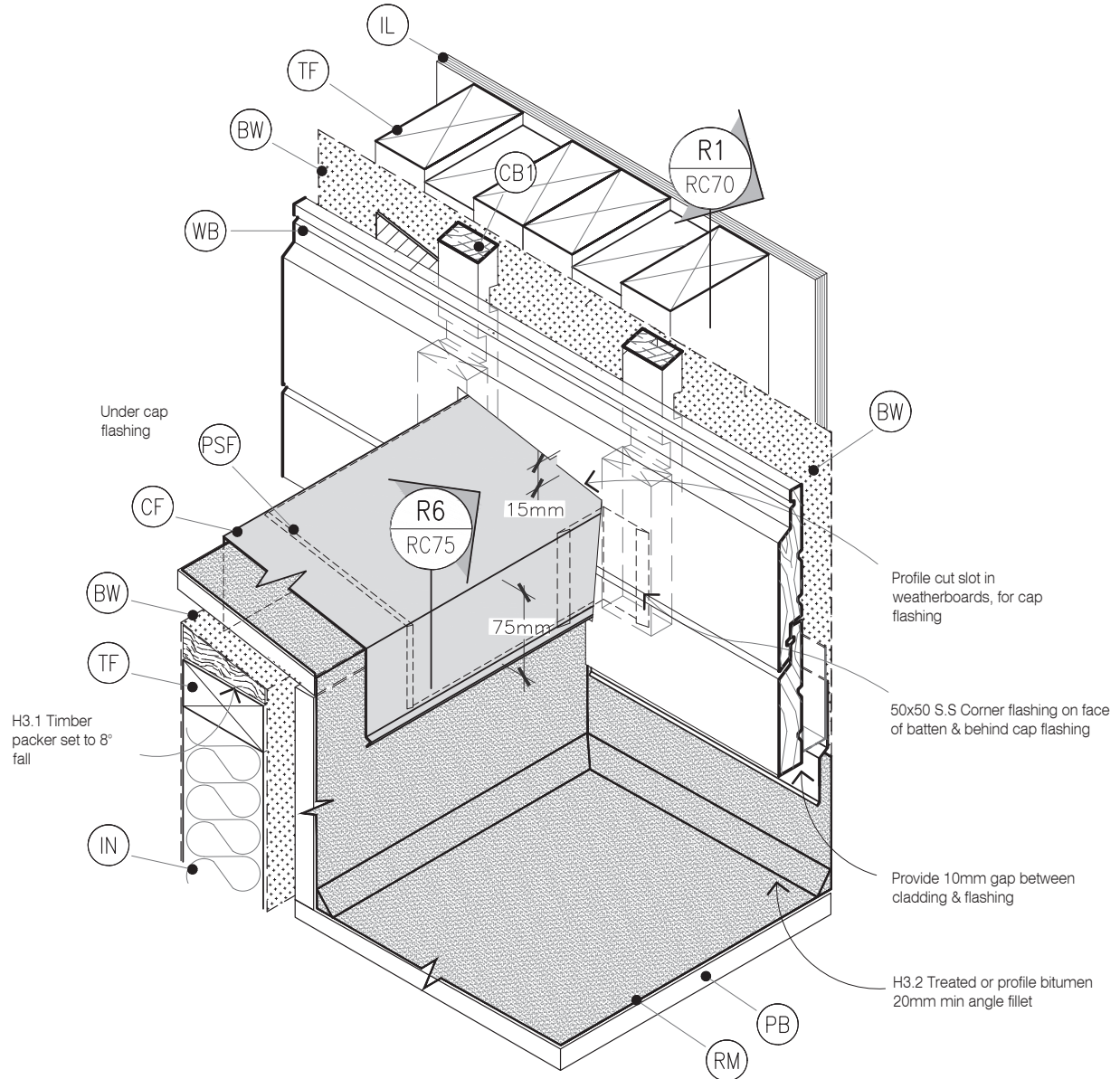
VERSION
2.5

LEGEND:

- (BW)** BUILDING WRAP: Flexible Wall Underlay, As per NZBC E2/AS1 - Table 23, In extra high wind zones, Rigid Underlay required (9.1.7.2 E2/AS1)
- (CB1)** CAVITY BATTEN - NON STRUCTURAL : Horizontally installed JSC-U 45mm x 20mm Radiata Pine H3.2 treated, both face castellated and 18° bevelled edges.
- (CC)** CAVITY CLOSURE: Cavity closure strip, positioned to give a 15mm Min drip edge to cladding
- (CF)** CAP FLASHING: Continuous parapet flashing. Materials as per E2/AS1 4.3 + Figure 9 & Table 7

- (FT)** FLASHING TAPE: As per E2/AS1 4.3.11
- (IL)** INTERNAL LINING: Selected Internal Lining
- (IN)** INSULATION: Selected Insulation
- (PSF)** PARAPET SADDLE FLASHING: Materials as per E2/AS1 4.0, refer E2/AS1 Figure 11 & 12 . Typically 0.45mm Min 316 Stainless Steel. Refer Table 20 & Table 21 for Comparability of Materials in Contact

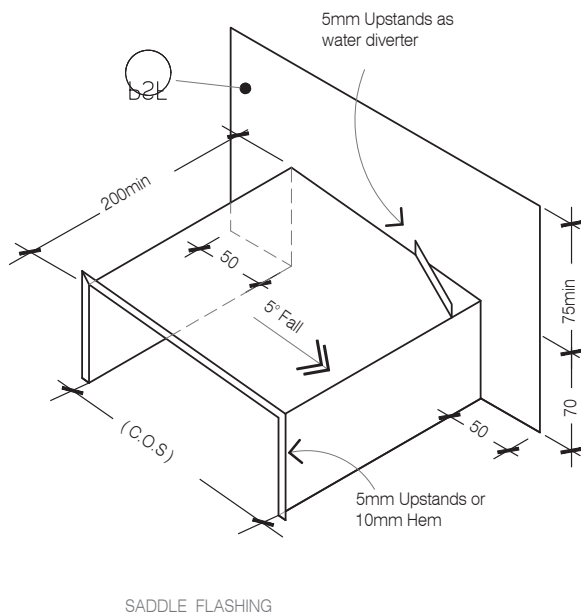
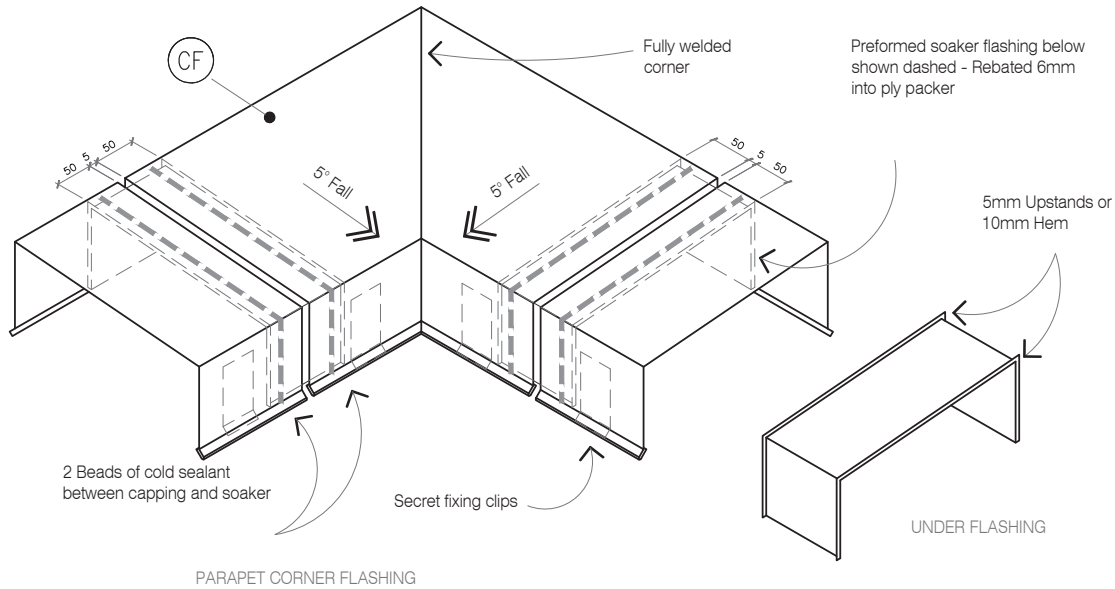
- (PB)** PLYWOOD BACKING: 17mm CCA treated H3.2 grade plywood substrate
- (RM)** ROOFING MEMBRANE: Selected System on 17mm CCA treated H3.2 grade plywood glued and screwed to Rafter. Roof Membrane requires 400mm solid block support each way & solid support to all sheet edges
- (TF)** TIMBER FRAME: H1.2 min treated timber framing
- (WB)** WEATHERBOARD: Selected JSC Rusticated Weatherboard



STAGE THREE

LEGEND:

(BW) BUILDING WRAP: Flexible Wall Underlay, As per NZBC E2/AS1 - Table 23, In extra high wind zones, Rigid Underlay required (9.1.7.2 E2/AS1)	(FT) FLASHING TAPE: As per E2/AS1 4.3.11	(PB) PLYWOOD BACKING: 17mm CCA treated H3.2 grade plywood substrate
(CB1) CAVITY BATTEN - NON STRUCTURAL : Horizontally installed JSC-U 45mm x 20mm Radiata Pine H3.2 treated, both face castellated and 18° bevelled edges.	(IL) INTERNAL LINING: Selected Internal Lining	(RM) ROOFING MEMBRANE: Selected System on 17mm CCA treated H3.2 grade plywood glued and screwed to Rafters. Roof Membrane requires 400mm solid block support each way & solid support to all sheet edges
(CC) CAVITY CLOSURE: Cavity closure strip, positioned to give a 15mm Min drip edge to cladding	(IN) INSULATION: Selected Insulation	(TF) TIMBER FRAME: H1.2 min treated timber framing
(CF) CAP FLASHING: Continuous parapet flashing. Materials as per E2/AS1 4.3 + Figure 9 & Table 7	(PSF) PARAPET SADDLE FLASHING: Materials as per E2/AS1 4.0, refer E2/AS1 Figure 11 & 12 . Typically 0.45mm Min 316 Stainless Steel. Refer Table 20 & Table 21 for Comparability of Materials in Contact	(WB) WEATHERBOARD: Selected JSC Rusticated Weatherboard



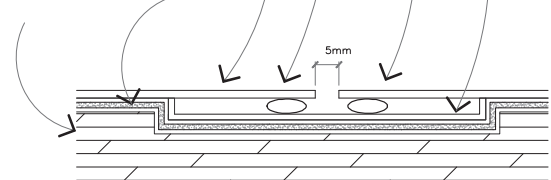
0.45mm minimum thickness 316 S.S Under Flashing rebated 6mm into ply

Minimum 6mm diameter sealant bead before compression

(CF) 0.45mm minimum thickness 316 S.S Cap Flashing

(RM) Roofing membrane as separation layer

(PB) 17mm H3.2 treated ply packer



SECTION THROUGH SOAKER FLASHING



JSC PREMIUM ARCHITECTURAL & BUILDING SOLUTIONS

TYPE
RUSTICATED WB - 20MM CAVITY FIX

NAME
Typical Parapet - Capping Joint Detail

• TO BE READ IN CONJUNCTION WITH COMPLETE JSC RUSTICLAD SYSTEM LITERATURE
• DETAILS MAY BE SUBJECT CHANGE WITHOUT NOTICE

CodeMark
CMN230081

DRAWING SCALE
1:2.5 @ A4

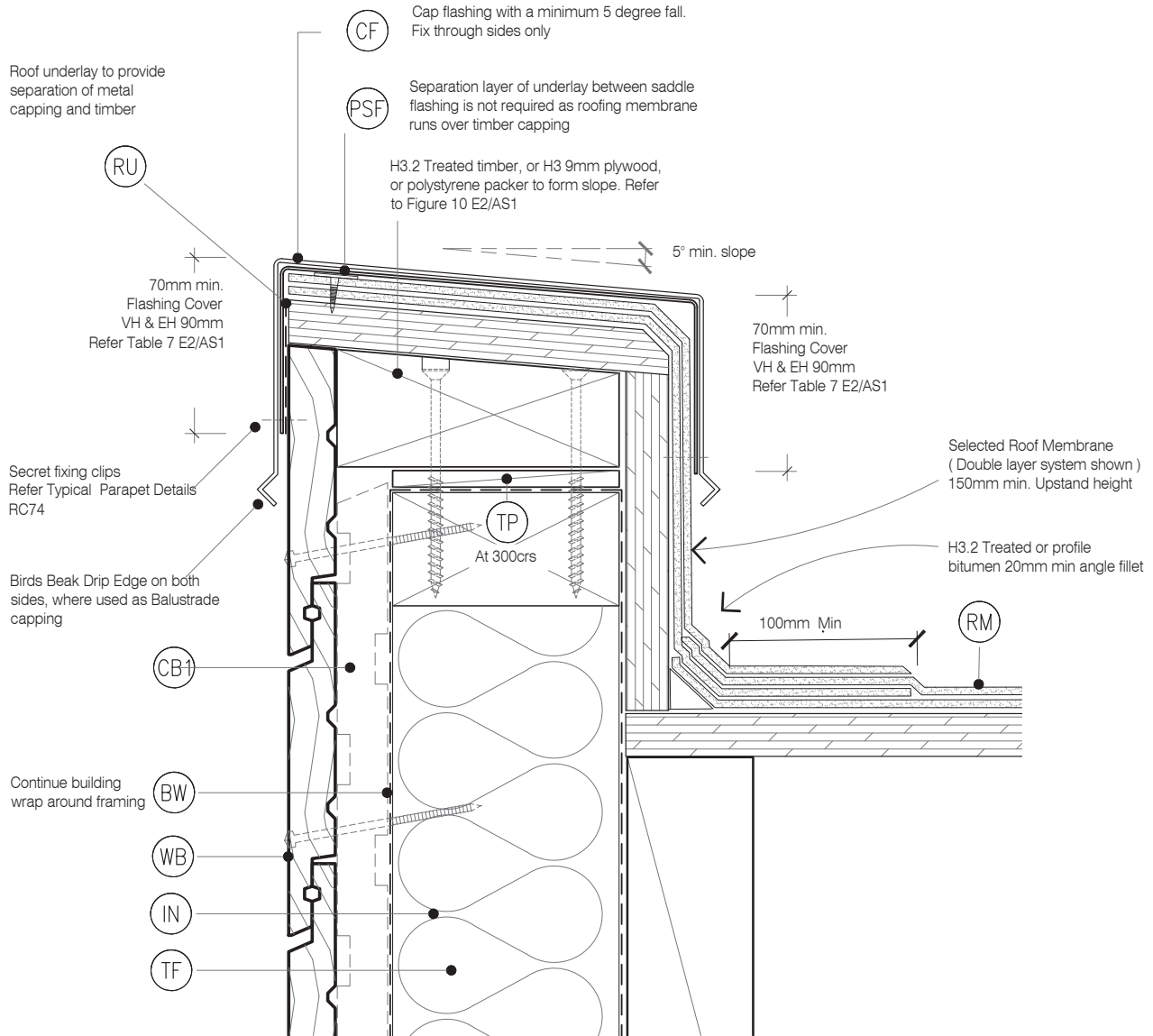
ISSUE DATE
24/02/2025

DRAWING NUMBER
JSC 20CF RC74

VERSION
2.5

LEGEND:

(BW) BUILDING WRAP: Flexible Wall Underlay, As per NZBC E2/AS1 - Table 23, In extra high wind zones, Rigid Underlay required (9.1.7.2 E2/AS1)	(FT) FLASHING TAPE: As per E2/AS1 4.3.11	(PB) PLYWOOD BACKING: 17mm CCA treated H3.2 grade plywood substrate
(CB1) CAVITY BATTEN - NON STRUCTURAL : Horizontally installed JSC-U 45mm x 20mm Radiata Pine H3.2 treated, both face castellated and 18° bevelled edges.	(IL) INTERNAL LINING: Selected Internal Lining	(RM) ROOFING MEMBRANE: Selected System on 17mm CCA treated H3.2 grade plywood glued and screwed to Rafters. Roof Membrane requires 400mm solid block support each way & solid support to all sheet edges
(CC) CAVITY CLOSURE: Cavity closure strip, positioned to give a 15mm Min drip edge to cladding	(IN) INSULATION: Selected Insulation	(TF) TIMBER FRAME: H1.2 min treated timber framing
(CF) CAP FLASHING: Continuous parapet flashing. Materials as per E2/AS1 4.3 + Figure 9 & Table 7	(PSF) PARAPET SADDLE FLASHING: Materials as per E2/AS1 4.0, refer E2/AS1 Figure 11 & 12 . Typically 0.45mm Min 316 Stainless Steel. Refer Table 20 & Table 21 for Comparability of Materials in Contact	(WB) WEATHERBOARD: Selected JSC Rusticated Weatherboard

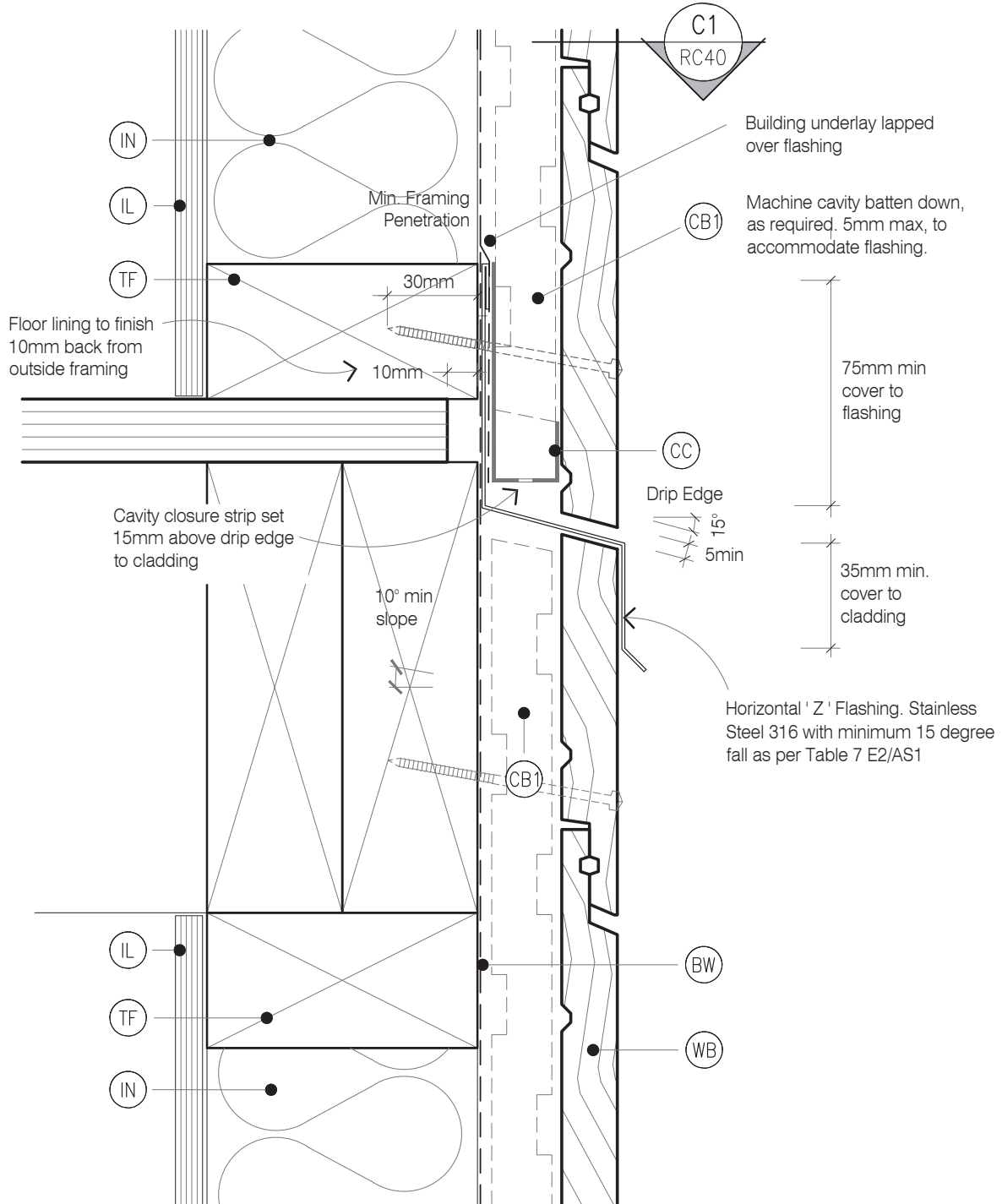


LEGEND :

- (AF) APRON FLASHING: Materials as per E2/AS1 4.0, Coating to match roofing material or refer E2/AS1 Table 21. Flashing Cover 130mm min. (L,M & H $\geq 10^\circ$) All others 200mm Refer Table 7 E2/AS1
- (BW) BUILDING WRAP: Flexible Wall Underlay, As per NZBC E2/AS1 - Table 23, In extra high wind zones, Ridgid Underlay required (9.1.7.2 E2/AS1)
- (CB1) CAVITY BATTEN - NON STRUCTURAL : Vertically installed JSC-U 45mm x 20mm Radiata Pine H3.2 treated, both face castellated and 18° bevelled edges.

- (CC) CAVITY CLOSURE: Cavity closure strip, positioned to give a 15mm Min drip edge to cladding
- (IL) INTERNAL LINING: Selected Internal Lining
- (IN) INSULATION: Selected Insulation
- (HS) HEAD SOFFIT SCRIBER: JSC 27 mm x 40 mm Fix with 75 x 3.15mm 316 S.S nail in 2.5mm predrilled hole
- (MR) METAL ROOFING : Selected Metal Roofing

- (SL) SOFFIT LINING: JSC Soffit Lining
- (TF) TIMBER FRAME: H1.2 min treated timber framing
- (TP) TIMBER PACKER: H3.2 Treated at 300crs to allow ventilation over the top of the wall.
- (RU) ROOFING UNDERLAY: Selected Roofing Underlay As Per AS/AZS4200 with Mesh or Self Supported
- (WB) WEATHERBOARD: Selected JSC Rusticated Weatherboard



TYPE
RUSTICATED WB - 45MM CAVITY FIX

NAME
Drained Inter Storey Joint

- TO BE READ IN CONJUNCTION WITH COMPLETE JSC RUSTICLAD SYSTEM LITERATURE
- DETAILS MAY BE SUBJECT CHANGE WITHOUT NOTICE

CodeMark
CMNZ30081

DRAWING SCALE
1:2 @ A4

ISSUE DATE
24/02/2025

DRAWING NUMBER
JSC 20CF RC80

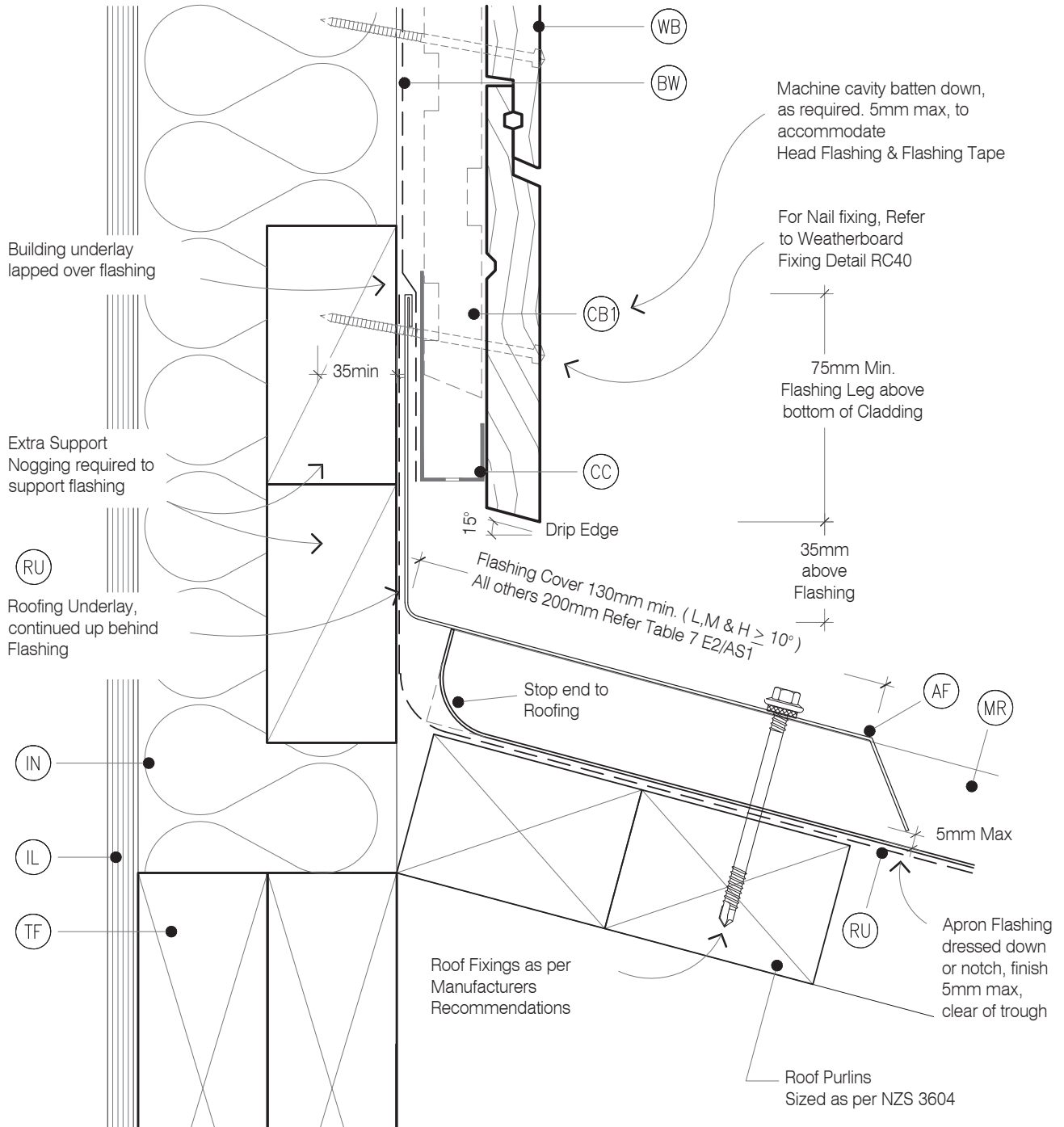
VERSION
2.5

LEGEND :

- (AF) APRON FLASHING: Materials as per E2/AS1 4.0, Coating to match roofing material or refer E2/AS1 Table 21. Flashing Cover 130mm min. (L,M & H $\geq 10^\circ$) All others 200mm Refer Table 7 E2/AS1
- (BW) BUILDING WRAP: Flexible Wall Underlay, As per NZBC E2/AS1 - Table 23, In extra high wind zones, Rigid Underlay required (9.1.7.2 E2/AS1)
- (CB1) CAVITY BATTEN - NON STRUCTURAL : Vertically installed JSC-U 45mm x 20mm Radiata Pine H3.2 treated, both face castellated and 18° bevelled edges.

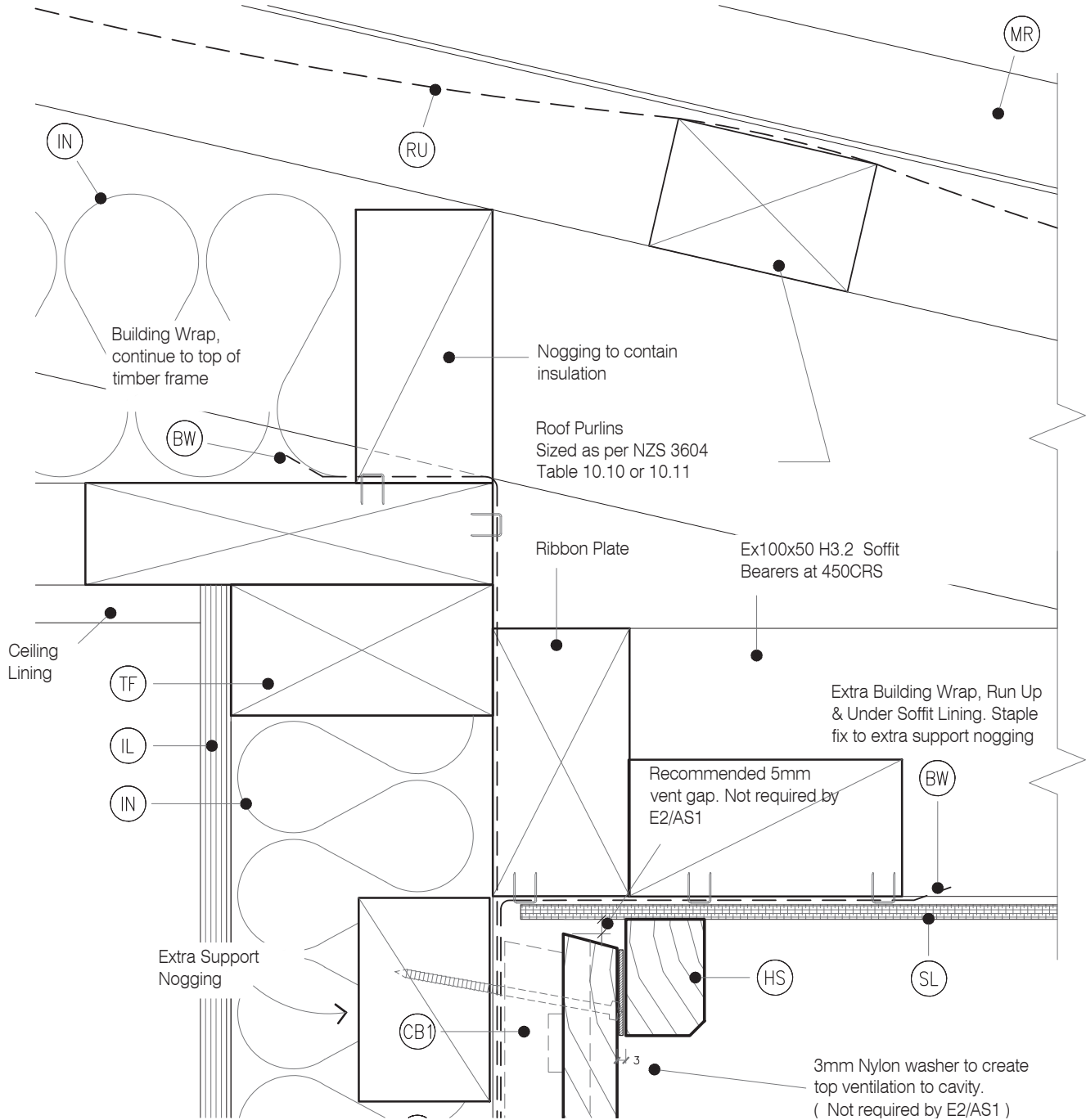
- (CC) CAVITY CLOSURE: Cavity closure strip, positioned to give a 15mm Min drip edge to cladding
- (IL) INTERNAL LINING: Selected Internal Lining
- (IN) INSULATION: Selected Insulation
- (HS) HEAD SOFFIT SCRIBER: JSC 27 mm x 40 mm Fix with 75 x 3.15mm 316 S.S nail in 2.5mm predrilled hole
- (MR) METAL ROOFING : Selected Metal Roofing

- (SL) SOFFIT LINING: JSC Soffit Lining
- (TF) TIMBER FRAME: H1.2 min treated timber framing
- (TP) TIMBER PACKER: H3.2 Treated at 300crs to allow ventilation over the top of the wall.
- (RU) ROOFING UNDERLAY: Selected Roofing Underlay As Per AS/AZS4200 with Mesh or Self Supported
- (WB) WEATHERBOARD: Selected JSC Rusticated Weatherboard



LEGEND :

(AF)	APRON FLASHING: Materials as per E2/AS1 4.0, Coating to match roofing material or refer E2/AS1 Table 21. Flashing Cover 130mm min. (L,M & H ≥ 10°) All others 200mm Refer Table 7 E2/AS1	(CC)	CAVITY CLOSURE: Cavity closure strip, positioned to give a 15mm Min drip edge to cladding	(SL)	SOFFIT LINING: JSC Soffit Lining
(BW)	BUILDING WRAP: Flexible Wall Underlay, As per NZBC E2/AS1 - Table 23, In extra high wind zones, Ridgid Underlay required (9.1.7.2 E2/AS1)	(IL)	INTERNAL LINING: Selected Internal Lining	(TF)	TIMBER FRAME: H1.2 min treated timber framing
(CB1)	CAVITY BATTEN - NON STRUCTURAL : Vertically installed JSC-U 45mm x 20mm Radiata Pine H3.2 treated, both face castellated and 18° bevelled edges.	(IN)	INSULATION: Selected Insulation	(TP)	TIMBER PACKER: H3.2 Treated at 300crs to allow ventilation over the top of the wall.
		(HS)	HEAD SOFFIT SCRIBER: JSC 27 mm x 40 mm Fix with 75 x 3.15mm 316 S.S nail in 2.5mm predrilled hole	(RU)	ROOFING UNDERLAY: Selected Roofing Underlay As Per AS/AZS4200 with Mesh or Self Supported
		(MR)	METAL ROOFING : Selected Metal Roofing	(WB)	WEATHERBOARD: Selected JSC Rusticated Weatherboard



TYPE
RUSTICATED WB - 45MM CAVITY FIX

NAME
Soffit Detail at Wall

- TO BE READ IN CONJUNCTION WITH COMPLETE JSC RUSTICLAD SYSTEM LITERATURE
- DETAILS MAY BE SUBJECT CHANGE WITHOUT NOTICE

CodeMark
CMN230081

DRAWING SCALE
1:2 @ A4

ISSUE DATE
24/02/2025

DRAWING NUMBER
JSC 20CF RC82

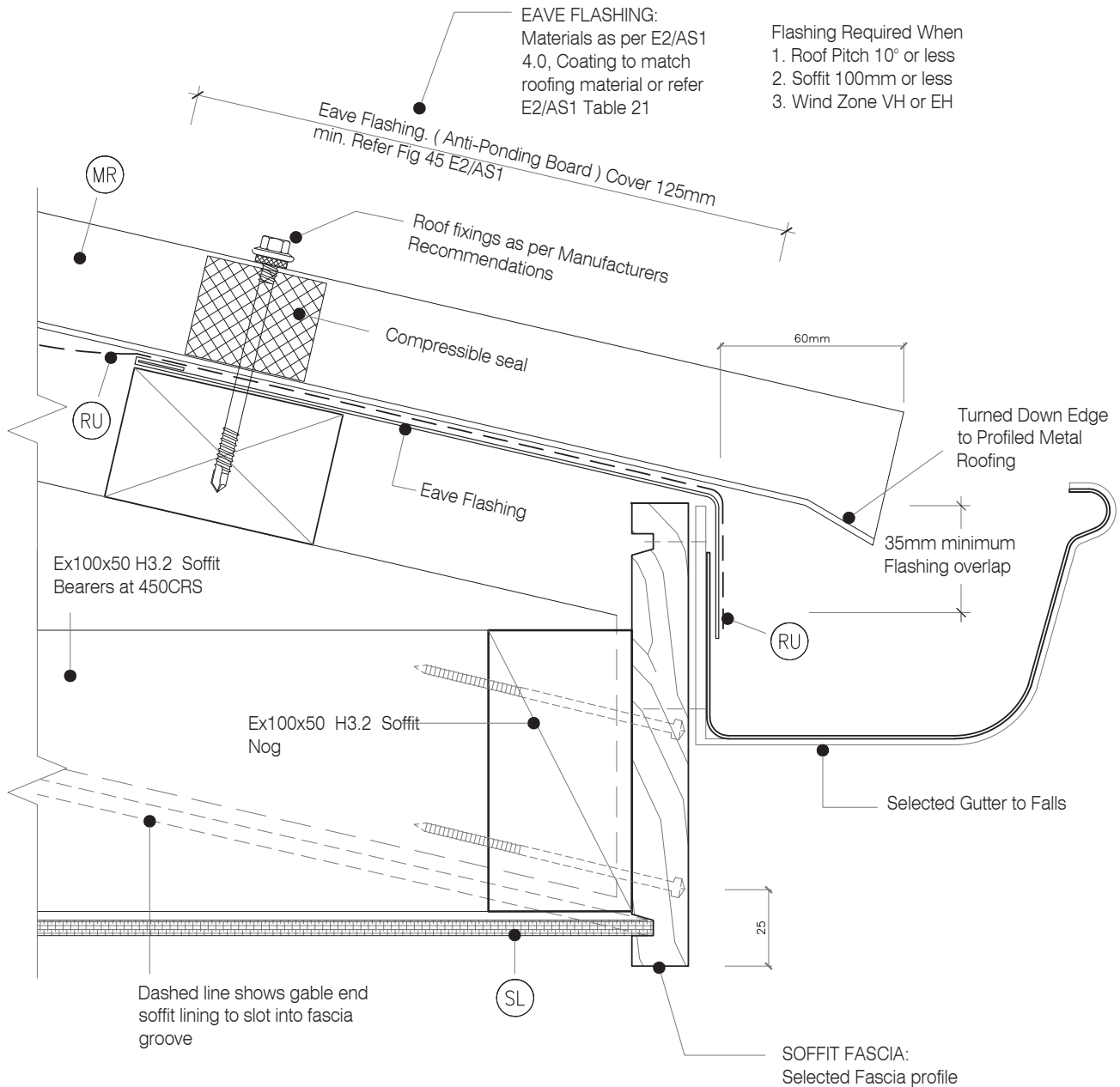
VERSION
2.5

LEGEND :

- (AF) APRON FLASHING: Materials as per E2/AS1 4.0, Coating to match roofing material or refer E2/AS1 Table 21. Flashing Cover 130mm min. (L,M & H $\geq 10^\circ$) All others 200mm Refer Table 7 E2/AS1
- (BW) BUILDING WRAP: Flexible Wall Underlay, As per NZBC E2/AS1 - Table 23, In extra high wind zones, Ridgid Underlay required (9.1.7.2 E2/AS1)
- (CB1) CAVITY BATTEN - NON STRUCTURAL : Vertically installed JSC-U 45mm x 20mm Radiata Pine H3.2 treated, both face castellated and 18° bevelled edges.

- (CC) CAVITY CLOSURE: Cavity closure strip, positioned to give a 15mm Min drip edge to cladding
- (IL) INTERNAL LINING: Selected Internal Lining
- (IN) INSULATION: Selected Insulation
- (HS) HEAD SOFFIT SCRIBER: JSC 27 mm x 40 mm Fix with 75 x 3.15mm 316 S.S nail in 2.5mm predrilled hole
- (MR) METAL ROOFING : Selected Metal Roofing

- (SL) SOFFIT LINING: JSC Soffit Lining
- (TF) TIMBER FRAME: H1.2 min treated timber framing
- (TP) TIMBER PACKER: H3.2 Treated at 300crs to allow ventilation over the top of the wall.
- (RU) ROOFING UNDERLAY: Selected Roofing Underlay As Per AS/AZS4200 with Mesh or Self Supported
- (WB) WEATHERBOARD: Selected JSC Rusticated Weatherboard



TYPE
RUSTICATED WB - 45MM CAVITY FIX

NAME
Soffit Detail at Fascia

- TO BE READ IN CONJUNCTION WITH COMPLETE JSC RUSTICLAD SYSTEM LITERATURE
- DETAILS MAY BE SUBJECT CHANGE WITHOUT NOTICE

CodeMark
CMNZ30081

DRAWING SCALE
1:2 @ A4

ISSUE DATE
24/02/2025

DRAWING NUMBER
JSC 20CF RC83

VERSION
2.5

LEGEND :

- (AF) APRON FLASHING: Materials as per E2/AS1 4.0, Coating to match roofing material or refer E2/AS1 Table 21. Flashing Cover 130mm min. (L, M & H \geq 10°) All others 200mm Refer Table 7 E2/AS1
- (BW) BUILDING WRAP: Flexible Wall Underlay, As per NZBC E2/AS1 - Table 23, In extra high wind zones, Rigid Underlay required (9.1.7.2 E2/AS1)
- (CB1) CAVITY BATTEN - NON STRUCTURAL : Vertically installed JSC-U 45mm x 20mm Radiata Pine H3.2 treated, both face castellated and 18° bevelled edges.

- (CC) CAVITY CLOSURE: Cavity closure strip, positioned to give a 15mm Min drip edge to cladding
- (IL) INTERNAL LINING: Selected Internal Lining
- (IN) INSULATION: Selected Insulation
- (HS) HEAD SOFFIT SCRIBER: JSC 27 mm x 40 mm Fix with 75 x 3.15mm 316 S.S nail in 2.5mm predrilled hole
- (MR) METAL ROOFING : Selected Metal Roofing

- (SL) SOFFIT LINING: JSC Soffit Lining
- (TF) TIMBER FRAME: H1.2 min treated timber framing
- (TP) TIMBER PACKER: H3.2 Treated at 300crs to allow ventilation over the top of the wall.
- (RU) ROOFING UNDERLAY: Selected Roofing Underlay As Per AS/AZS4200 with Mesh or Self Supported
- (WB) WEATHERBOARD: Selected JSC Rusticated Weatherboard

